



Final Report On

Charcoal Price Tracking
in
Major Urban Centres of Ghana

January 2014 – December 2014

Strategic Planning & Policy Division

February 2015

FOREWORD

The Energy Commission is mandated by law; Energy Commission Act 1997 (Act 541) to prepare, review and update periodically indicative national energy plans to ensure that reasonable demands of energy are met in a sustainable manner. In fulfillment of its mandate, the Commission has been compiling charcoal prices in major urban centres of the country to enable it undertake effective long term woodfuel supply and demand planning for the country.

Woodfuel accounts for over 50% of the country's total final energy consumption. According to the 2010 national population census, about 73% and 16% rural households used firewood and charcoal respectively for cooking. For urban households, about 25% and over 50% still depend on firewood and charcoal respectively for cooking.

The demand for wood for charcoal production has increased at an average of 1.2% annually since 2008 whilst firewood demand has been falling at an average of about 7% per annum over the same period emanating from demand for higher forms of energy sources in line with Ghana's attainment of middle-income developing country status. However for every unit of charcoal produced, three-to-five units of wood are used depending on the wood type and the moisture content. Such developments could have more serious demand implications on the country's woodfuel resource base, which is already threatened by the high deforestation rate in the country.

It is our expectation that the information contained in this report would be useful to a wide range of users to facilitate effective broad base long term and sustainable woodfuel planning and management for the country.

We would appreciate very much any feedback by way of comments and suggestions from readers and users of the report.

A.K. Ofori Ahenkorah, PhD
Executive Secretary

Energy Commission

PMB, Ministries Post Office

Accra **GHANA**

Tel: 233 302 813756/7/9

Fax: 233 302 813764/2

Email: info@energycom.gov.gh

Office location:

Ghana Airways Avenue

Airport Residential Area, Accra

TABLE OF CONTENTS

FOREWORD.....	i
TABLE OF CONTENTS	ii
List of Tables	iii
List of Figures.....	v
CHAPTER ONE: GENERAL INTRODUCTION.....	1
1.0 Introduction	1
1.1 Background	1
1.2 Objective of Study	1
1.3 Organization of the Report.....	1
CHAPTER TWO: SURVEY METHODOLOGY AND ANALYSIS OF DATA	2
2.0 Introduction	2
2.1 Survey Instrument Design.....	2
2.2 Sample Design and Selection	2
2.3 Training of Field Enumerators	2
2.4 Design of Data Entry Template	2
2.5 Data capture and Analysis.....	3
2.6 Presentation of Results.....	3
CHAPTER THREE: RESULTS	4
3.1 Results.....	4
3.2 Causes allegedly contributing to high prices of charcoal.....	44
3.3 Sources of charcoal supply.....	45
CHAPTER FOUR: CONCLUSION	46
4.1 Key Findings	46
APPENDIX	47
A.1 Map of Ghana showing the Ecological Zones of the Country	47
A.2 Map of Ghana showing Regional Capitals and Some Districts urban centres	48

List of Tables

Table 3.1: Mean Weights of Charcoal in kilogramme (kg)	4
Table 3.2: January 2014 Statistics - Charcoal Prices by Major consuming urban centres	5
Table 3.3: January 2014 Statistics - Charcoal Prices by Regions	6
Table 3.4: Average Prices of charcoal in Ghana Cedis per kg by Regions: January 2014.....	6
Table 3.2: February 2014 Statistics - Charcoal Prices by Major consuming urban centres	7
Table 3.6: February 2014 Statistics - Charcoal Prices by Regions	8
Table 3.7: Average Prices of charcoal in Ghana Cedis per kg by Regions: February 2014.....	8
Table 3.8: March 2014 Statistics - Charcoal Prices by Major consuming urban centres	9
Table 3.10: Average Prices of charcoal in Ghana Cedis per kg by Regions: March 2014.....	10
Table 3.12: April 2014 Statistics - Charcoal Prices by Regions	12
Table 3.13: Average Prices of charcoal in Ghana Cedis per kg by Regions: April 2014.....	12
Table 3.14: May 2014 Statistics - Charcoal Prices by Major consuming Urban centres	13
Table 3.15: May 2014 Statistics - Charcoal Prices by Regions	14
Table 3.16: Average Prices of charcoal in Ghana Cedis per kg by Regions: May 2014.....	14
Table 3.17: June 2014 Statistics - Charcoal Prices by Major consuming urban centres	15
Table 3.18: June 2014 Statistics - Charcoal Prices by Regions	16
Table 3.19: Average Prices of charcoal in Ghana Cedis per kg by Regions: June 2014.....	16
Table 3.20: July 2014 Statistics - Charcoal Prices by Major consuming urban centres	17
Table 3.21: July 2014 Statistics - Charcoal Prices by Regions.....	18
Table 3.22: Average Prices of charcoal in Ghana Cedis per kg by Regions: July 2014	18
Table 3.23: August 2014 Statistics - Charcoal Prices by Major consuming urban centres	19
Table 3.24: August 2014 Statistics - Charcoal Prices by Regions	20
Table 3.25: Average Prices of charcoal in Ghana Cedis per kg by Regions: August 2014.....	20
Table 3.26: September 2014 Statistics - Charcoal Prices by Major consuming urban centres	21
Table 3.27: September 2014 Statistics - Charcoal Prices by Regions.....	22
Table 3.28: Average Prices of charcoal in Ghana Cedis per kg by Regions: September 2014	22
Table 3.29: October 2014 Statistics - Charcoal Prices by Major consuming urban centres	23
Table 3.30: October 2014 Statistics - Charcoal Prices by Regions.....	24

Table 3.31: Average Prices of charcoal in Ghana Cedis per kg by Regions: October 2014	24
Table 3.32: November 2014 Statistics - Charcoal Prices by Major consuming urban centres	25
Table 3.33: November 2014 Statistics - Charcoal Prices by Regions	26
Table 3.34: Average Prices of charcoal in Ghana Cedis per kg by Regions: November 2014.....	26
Table 3.35: December 2014 Statistics - Charcoal Prices by Major consuming urban centres	27
Table 3.36: December 2014 Statistics - Charcoal Prices by Regions	28
Table 3.37: Average Prices of charcoal in Ghana Cedis per kg by Regions: December 2014	28
Table 3.38: January – December 2014 Statistics - Charcoal Prices by Major consuming urban centres.....	29
Table 3.39: January - December 2014 Statistics - Charcoal Prices by Regions	30
Table 3.40: Average Prices of charcoal in Ghana Cedis per kg by Regions: January - December 2014.....	30
Table 3.41: Mean Charcoal Prices by Regions (% Change over previous year)	31
Table 3.42: Mean Charcoal Prices per kg in in Ghana Cedis by Regions (% Change over previous year)	31
Table 3.43: January – December 2014 Statistics – Charcoal Prices by Regional Capitals	32
Table 3.44: Average Prices of charcoal in Ghana Cedis per kg by Regions Capitals: January – December 2014.....	32
Table 3.45: Mean Charcoal Prices by Capital Urban centres (% Change over previous year)	33
Table 3.46: Mean Charcoal Prices per kg in in Ghana Cedis by Capital Urban centres (% Change over previous year)	33
Table 3.47: January - December 2014 Statistics - Charcoal Prices by Ecological Zones	34
Table 3.48: Mean Charcoal Prices by Ecological Zones (% Change over previous year)	34
Table 3.49: Average Prices of charcoal in Ghana Cedis per kg by Ecological Zones (January- December 2014)	34
Table 3.50: High and Low Price Districts - 2014	35
Table 3.51: Mean Prices of charcoal in Ghana Cedis by Regions: January –December 2014 (Maxi Bag)	37
Table 3.52: Mean Prices of charcoal in Ghana Cedis per kg: January – December 2014 (Maxi Bag)	39
Table 3.53: Mean Prices of charcoal in Ghana Cedis by Regions: January–December 2014 (Mini Bag)	41
Table 3.54: Mean Prices of charcoal in Ghana Cedis per kg: January – December 2014 (Mini Bag).....	43

List of Figures

Figure 3.1: Trends in Regional Mean charcoal Prices for Maxi Bag: January – December 2014.....	36
Figure 3.2: Trends in Regional Mean charcoal in Ghana Prices per kg: January – December 2014 (Maxi Bag)	38
Figure 3.3: Trends in Regional Mean charcoal Prices for Mini Bag: January – December 2014.....	40
Figure 3.4: Trends in Regional Mean charcoal Prices per kg for Mini Bag: January – December 2014.....	42
Figure 3.5: Causes allegedly contributing to high prices of charcoal	44
Figure 3.6: Sources of Charcoal Supply in 2014 (Production Areas)	45

CHAPTER ONE: GENERAL INTRODUCTION

1.0 Introduction

This report presents key findings/results of a survey on charcoal pricing in selected major urban centres/district/markets across the ten regions in the country for the period **January - December, 2014**. This chapter outlines the background to the survey, its objectives and organization of the report.

1.1 Background

The Strategic National Energy Plan (SNEP, 2006 - 2020) released by the Energy Commission in 2006 indicated that woodfuel accounts for about 60% of the country's total final energy by 2000. Furthermore, the Ghana Statistical Services reported in 2005 through the Ghana Living Standard Survey (GLSS5, 2008, Fifth Round), that about 80% of rural households and 53% of urban households use woodfuel for cooking in 2005. Again, according to Ghana Population & Housing Census (2010, Ghana Statistical Services), about 73% of rural households and 48% of urban households use firewood and charcoal respectively for cooking in 2010.

The Strategic National Energy Plan is being updated in 2015. This will involve the evaluation of future energy demand for all forms of energy and analysis of all supply possibilities to ensure that all reasonable demand for energy up to 2030 are met sustainably.

As part of the woodfuel planning process, this project seeks to collect the prices of charcoal in major charcoal consuming urban centres and regions of the country.

1.2 Objective of Study

The objective of the project is to collect data on charcoal market prices and weights in selected markets/centres/districts in each region of the country to build a database for the update of our Energy Statistics, Energy Outlook for Ghana and also for policy interventions.

1.3 Organization of the Report

The report is organized as follows: Chapter 1 covers introduction, background and objective of study. Chapter 2 presents the methodology for the survey, and the analysis of the data. Presentation of the results/findings of the analysis is found in Chapter 3. Chapter 4 gives conclusion. Summary Statistics and their normal distribution curves are added as Appendix.

CHAPTER TWO: SURVEY METHODOLOGY AND ANALYSIS OF DATA

2.0 Introduction

This chapter presents the methodology adopted in undertaking the survey. This comprises survey instrument design, sample selection, training of field enumerators, pre-testing of questionnaires, survey implementation, quality control procedures, design of data entry system, data entry, data cleaning, data accuracy, data analysis and report writing.

2.1 Survey Instrument Design

The survey instrument was designed for charcoal price tracking study. This initial survey instrument was peer-reviewed and revised after a series of interactive working sessions. The survey instrument sought to collect information on the charcoal supply and charcoal sales (pricing) throughout the country.

The questionnaires were then assigned unique identification numbers to facilitate back-tracking the data entered on the questionnaires to actual respondents in the case of data entry errors.

2.2 Sample Design and Selection

In all, 39 major charcoal consuming urban centres in the ten regions of the country were selected purposefully for the exercise. Then, in each market Centre, two charcoal dealers were randomly selected and the required information/responses elicited from them.

2.3 Training of Field Enumerators

Field enumerators were then trained on techniques of questionnaire administration and other relevant topics in the energy field. The training was held in all the ten regional capitals of the country. The training comprised theoretical instruction, mock questionnaire administration and pre-testing of the questionnaires.

After the training exercise, the enumerators were given the questionnaires so that they could begin collecting the data from their respective markets centres.

The field enumerators are to visit their respective market centres every two weeks and elicit responses on the prices of charcoal from two customers in the same market but who are unknown to each other. The responses are then transmitted through the postal system or over the internet to the Energy Commission for compilation and analysis.

2.4 Design of Data Entry Template

The Data Entry Template was designed using Census and Survey Processing System (CSPro). CSPro is a public domain statistical software package developed by the United States of America Census Bureau, Macro. CSPro is used for entering, editing, tabulating, and disseminating census and survey data. The appearance of the template closely resembles the questionnaires used for the data collection. Controls or

codes were built in the design of the data entry template to minimize data entry errors. These controls ensured logical sequencing of questions and range checks. All data entry records were subjected to double entry by allowing two entry clerks to enter the same record.

2.5 Data capture and Analysis

The field data captured using CSPro template was subjected to cleaning using STATA (a data analysis and statistical software) to identify data omissions; eliminate data entry errors and outliers. This was done to obtain quality data for the analysis. Copies of the field questionnaires and the un-cleaned data captured using the CSPro templates were preserved to allow for data verification during the subsequent data analysis stage(s).

Statistical and analytical tools such as SPSS, STATA and Excel are all employed to analyse and generate descriptive statistics, frequency distribution tables and their normal distributions.

The variables considered for the analysis include:

- price of charcoal (quantitative and continuous data);
- charcoal supply points/ production areas (qualitative and discrete data);
- causes allegedly contributing to high prices of charcoal (qualitative and discrete data).

2.6 Presentation of Results

The results/findings of the analysis of the data are presented in the following tables in chapter 3.

CHAPTER THREE: RESULTS

3.1 Results

Table 3.1: Mean Weights of Charcoal in kilogramme (kg)

Charcoal Source	Average Weights (kg)				Moisture Content
	Maxi Bag	Mean	Mini Bag	Mean	
1. Saw mill residue	44 - 45	44.50	21 - 22	21.50	Up to 40%
2. Savanna	55 - 60	57.50	30 - 32	31.00	Up to 20%
3. Acacia plantation	57 - 63	60.00	31 - 32	31.50	Up to 20%
4. All other wood	50 - 55	52.50	25 - 27	26.00	Up to 25%

Table 3.1 is used in the calculations of the tables involving the average prices of charcoal in Ghana Cedis per kg. The **mean values** are used in all the calculations of the price per unit weight for the various Regions.

Table 3.2: January 2014 Statistics - Charcoal Prices by Major consuming urban centres

Region	Town	MAXI BAG			MINI BAG		
		MEAN	MEDIAN	MODE	MEAN	MEDIAN	MODE
Eastern	Koforidua	24.13	24.00	24.00	18.13	18.00	18.00
	Akim Oda	21.00	21.00	21.00	17.13	17.00	17.00
	Donkorkrom	15.13	15.00	15.00	9.00	9.00	9.00
Volta	Nkwanta	32.75	33.00	33.00	16.25	16.00	16.00
	Denu	39.25	39.00	39.00	24.63	24.50	24.50
	Ho	31.75	32.00	32.00	15.13	15.00	15.00
Central	Winneba	28.13	28.00	28.00	18.13	18.00	18.00
	Cape-Coast	34.13	34.00	34.00	30.25	30.00	30.00
	Swedru	22.13	22.00	22.00	19.00	19.00	19.00
Western	Axim	31.13	31.00	31.00	16.75	17.00	17.00
	Sekondi	30.25	30.00	30.00	16.25	16.00	16.00
	Takoradi	27.13	27.00	27.00	18.13	18.00	18.00
	Tarkwa	21.88	22.00	22.00	18.25	18.00	18.00
	Juaboso	22.25	22.00	22.00	12.13	12.00	12.00
Ashanti	Konongo	20.13	20.00	20.00	12.25	12.00	12.00
	Kumasi	16.94	16.75	18.00	11.38	11.50	10.50
	Offinso	17.63	17.50	17.50	10.13	10.00	10.00
Brong Ahafo	Nkoranza South	12.00	12.00	12.00	6.13	6.00	6.00
	Atebubu	11.88	12.00	12.00	7.88	8.00	8.00
	Sunyani Municipal	16.88	17.00	17.00	8.38	8.50	8.50
	Techiman	15.00	15.00	15.00	9.00	9.00	9.00
	Jaman North	14.13	14.00	14.00	7.88	8.00	8.00
	Kintampo	11.13	11.00	11.00	5.63	5.50	5.50
Northern	Tamale	22.00	22.00	22.00	11.13	11.00	11.00
	Salaga	19.83	18.00	18.00	10.25	10.00	10.00
	Yendi	21.13	21.00	21.00	12.25	12.00	12.00
Upper East	Navorongo	31.13	31.00	31.00	21.88	22.00	22.00
	Bawku	31.25	31.25	31.50	18.00	18.00	18.00
	Bolga	23.13	23.00	23.00	16.13	16.00	16.00
Upper West	Jirapa	16.38	16.50	16.50	12.00	12.00	12.00
	Sissala East	12.00	12.00	12.00	6.13	6.00	6.00
	Wa	20.88	21.00	21.00	13.25	13.00	13.00
Greater Accra	Ashaiman	21.75	21.75	22.00	17.88	17.50	17.50
	Agbogbloshie	23.88	24.00	24.00	17.00	18.00	18.00
	Mallam Junction	21.88	22.00	22.00	17.13	17.00	17.00
	Accra New Town	26.88	27.00	27.00	22.38	22.25	22.00
	Tema Community 1	27.88	28.00	28.00	20.13	20.00	20.00
	Tema Community 9	26.25	26.25	26.00	16.25	16.00	16.00
Ghana		22.51	22.00	22.00	14.67	16.00	18.00

Table 3.3: January 2014 Statistics - Charcoal Prices by Regions

Region	Maxi Bag			Mini Bag		
	Mean	Median	Mode	Mean	Median	Mode
Eastern	20.08	21.00	21.00	14.75	17.00	9.00
Volta	34.58	33.00	32.00	18.67	16.00	15.00
Central	28.13	28.00	34.00	22.46	19.00	30.00
Western	26.53	27.00	22.00	16.30	17.00	18.00
Ashanti	17.91	17.75	20.00	11.43	12.00	12.00
Brong Ahafo	13.48	13.00	12.00	7.46	8.00	8.00
Northern	20.38	21.00	18.00	11.21	11.00	11.00
Upper East	28.50	31.00	31.00	18.67	18.00	18.00
Upper West	16.42	16.50	12.00	10.46	12.00	12.00
Greater Accra	24.75	25.00	22.00	18.46	17.75	17.00
Ghana	22.51	22.00	22.00	14.67	16.00	18.00

Table 3.4: Average Prices of charcoal in Ghana Cedis per kg by Regions: January 2014

Region	Maxi Bag			Mini Bag		
	Mean	Median	Mode	Mean	Median	Mode
Eastern	0.38	0.40	0.40	0.57	0.65	0.35
Volta	0.66	0.63	0.61	0.72	0.62	0.58
Central	0.47	0.47	0.57	0.71	0.60	0.95
Western	0.51	0.51	0.42	0.63	0.65	0.69
Ashanti	0.34	0.34	0.38	0.44	0.46	0.46
Brong Ahafo	0.23	0.23	0.21	0.24	0.26	0.26
Northern	0.35	0.37	0.31	0.36	0.35	0.35
Upper East	0.50	0.54	0.54	0.60	0.58	0.58
Upper West	0.29	0.29	0.21	0.34	0.39	0.39
Greater Accra	0.41	0.42	0.37	0.59	0.56	0.54

Table 3.2: February 2014 Statistics - Charcoal Prices by Major consuming urban centres

Region	Town	MAXI BAG			MINI BAG		
		MEAN	MEDIAN	MODE	MEAN	MEDIAN	MODE
Eastern	Koforidua	24.13	24.00	24.00	18.13	18.00	18.00
	Akim Oda	21.13	21.00	21.00	17.13	17.00	17.00
	Donkorkrom	15.25	15.25	15.00	9.25	9.00	9.00
Volta	Nkwanta	32.75	33.00	33.00	16.25	16.00	16.00
	Denu	39.50	39.50	39.00	24.63	24.50	24.50
	Ho	31.75	32.00	32.00	15.13	15.00	15.00
Central	Winneba	28.25	28.25	28.00	18.13	18.00	18.00
	Cape-Coast	34.13	34.00	34.00	30.25	30.00	30.00
	Swedru	22.13	22.00	22.00	19.00	19.00	19.00
Western	Axim	31.13	31.00	31.00	16.75	17.00	17.00
	Sekondi	30.25	30.00	30.00	16.25	16.00	16.00
	Takoradi	27.13	27.00	27.00	18.13	18.00	18.00
	Tarkwa	21.88	22.00	22.00	18.25	18.00	18.00
	Juaboso	22.38	22.25	22.00	12.25	12.25	12.00
Ashanti	Konongo	20.13	20.00	20.00	12.25	12.00	12.00
	Kumasi	17.00	16.75	18.00	11.38	11.50	10.50
	Offinso	17.63	17.50	17.50	10.13	10.00	10.00
Brong Ahafo	Nkoranza South	12.13	12.00	12.00	6.13	6.00	6.00
	Atebubu	11.88	12.00	12.00	8.00	8.00	8.00
	Sunyani Municipal	16.88	17.00	17.00	8.38	8.50	8.50
	Techiman	15.00	15.00	15.00	9.00	9.00	9.00
	Jaman North	14.13	14.00	14.00	8.00	8.00	8.00
	Kintampo	11.13	11.00	11.00	5.75	5.75	5.50
Northern	Tamale	22.00	22.00	22.00	11.13	11.00	11.00
	Salaga	19.83	18.00	18.00	10.25	10.00	10.00
	Yendi	21.13	21.00	21.00	12.25	12.00	12.00
Upper East	Navorongo	31.13	31.00	31.00	21.88	22.00	22.00
	Bawku	31.25	31.25	31.50	18.25	18.00	18.00
	Bolga	23.13	23.00	23.00	16.13	16.00	16.00
Upper West	Jirapa	16.38	16.50	16.50	12.00	12.00	12.00
	Sissala East	12.13	12.00	12.00	6.25	6.25	6.00
	Wa	20.88	21.00	21.00	13.25	13.00	13.00
Greater Accra	Ashaiman	21.88	22.00	22.00	18.13	17.75	17.50
	Agbogbloshie	24.00	24.00	24.00	17.75	18.00	18.00
	Mallam Junction	22.13	22.00	22.00	17.13	17.00	17.00
	Accra New Town	27.25	27.00	27.00	22.38	22.25	22.00
	Tema Community 1	28.13	28.00	28.00	20.13	20.00	20.00
	Tema Community 9	26.25	26.25	26.00	16.25	16.00	16.00
Ghana		22.57	22.00	22.00	14.73	16.00	18.00

Table 3.6: February 2014 Statistics - Charcoal Prices by Regions

Region	Maxi Bag			Mini Bag		
	Mean	Median	Mode	Mean	Median	Mode
Eastern	20.17	21.00	24.00	14.83	17.00	9.00
Volta	34.67	33.00	32.00	18.67	16.00	15.00
Central	28.17	28.25	34.00	22.46	19.00	30.00
Western	26.55	27.00	22.00	16.33	17.00	18.00
Ashanti	17.94	17.75	20.00	11.43	12.00	12.00
Brong Ahafo	13.48	13.25	12.00	7.52	8.00	8.00
Northern	20.42	21.00	22.00	11.21	11.00	11.00
Upper East	28.50	31.00	31.00	18.75	18.00	18.00
Upper West	16.46	16.50	16.50	10.50	12.00	12.00
Greater Accra	24.94	25.00	22.00	18.63	18.00	18.00
Ghana	22.57	22.00	22.00	14.73	16.00	18.00

Table 3.7: Average Prices of charcoal in Ghana Cedis per kg by Regions: February 2014

Region	Maxi Bag			Mini Bag		
	Mean	Median	Mode	Mean	Median	Mode
Eastern	0.38	0.40	0.46	0.57	0.65	0.35
Volta	0.66	0.63	0.61	0.72	0.62	0.58
Central	0.47	0.47	0.57	0.71	0.60	0.95
Western	0.51	0.51	0.42	0.63	0.65	0.69
Ashanti	0.34	0.34	0.38	0.44	0.46	0.46
Brong Ahafo	0.23	0.23	0.21	0.24	0.26	0.26
Northern	0.36	0.37	0.38	0.36	0.35	0.35
Upper East	0.50	0.54	0.54	0.60	0.58	0.58
Upper West	0.29	0.29	0.29	0.34	0.39	0.39
Greater Accra	0.42	0.42	0.37	0.59	0.57	0.57

Table 3.8: March 2014 Statistics - Charcoal Prices by Major consuming urban centres

Region	Town	MAXI BAG			MINI BAG		
		MEAN	MEDIAN	MODE	MEAN	MEDIAN	MODE
Eastern	Koforidua	24.63	24.75	25.00	18.63	18.75	19.00
	Akim Oda	21.13	21.00	21.00	17.13	17.00	17.00
	Donkorkrom	15.25	15.25	15.00	9.25	9.00	9.00
Volta	Nkwanta	32.25	32.00	32.00	15.75	15.50	15.00
	Denu	37.50	37.50	37.00	24.38	24.25	24.00
	Ho	31.25	31.00	31.00	15.13	15.00	15.00
Central	Winneba	28.25	28.25	28.00	18.13	18.00	18.00
	Cape-Coast	34.13	34.00	34.00	30.25	30.00	30.00
	Swedru	22.13	22.00	22.00	19.13	19.00	19.00
Western	Axim	31.63	31.75	32.00	17.25	17.50	18.00
	Sekondi	31.00	31.25	31.50	16.50	16.50	16.50
	Takoradi	27.38	27.50	27.50	18.63	18.75	19.00
	Tarkwa	22.50	22.50	23.00	19.25	19.00	19.00
	Juaboso	22.63	22.50	22.50	12.50	12.50	12.50
Ashanti	Konongo	20.88	21.00	21.50	12.50	12.50	12.50
	Kumasi	17.00	16.75	18.00	11.50	11.50	10.50
	Offinso	17.63	17.50	17.50	10.63	10.75	11.00
Brong Ahafo	Nkoranza South	14.00	14.00	14.00	7.00	7.00	7.00
	Atebubu	11.88	12.00	12.00	8.00	8.00	8.00
	Sunyani Municipal	17.75	18.00	18.00	9.13	9.00	9.00
	Techiman	15.00	15.00	15.00	9.00	9.00	9.00
	Jaman North	14.13	14.00	14.00	8.00	8.00	8.00
	Kintampo	11.13	11.00	11.00	5.88	6.00	6.00
Northern	Tamale	22.50	22.50	23.00	11.38	11.50	11.50
	Salaga	20.00	18.25	18.50	10.75	11.00	11.00
	Yendi	21.25	21.25	21.50	12.75	13.00	13.00
Upper East	Navorongo	31.25	31.25	31.00	21.88	22.00	22.00
	Bawku	31.25	31.25	31.50	18.38	18.25	18.00
	Bolga	23.38	23.50	23.50	16.38	16.50	16.50
Upper West	Jirapa	16.38	16.50	16.50	12.25	12.25	12.50
	Sissala East	14.50	14.50	15.00	6.75	6.75	7.00
	Wa	20.88	21.00	21.00	13.50	13.50	13.50
Greater Accra	Ashaiman	21.88	22.00	22.00	18.13	18.00	18.00
	Agbogbloshie	24.38	24.50	24.50	18.00	18.00	18.00
	Mallam Junction	23.75	23.75	24.00	18.75	19.00	19.00
	Accra New Town	27.50	27.50	27.50	22.63	22.50	22.50
	Tema Community 1	28.13	28.00	28.00	20.13	20.00	20.00
	Tema Community 9	29.50	29.50	30.00	20.00	20.00	20.00
Ghana		22.89	22.00	22.00	15.07	16.00	18.00

Table 3.9: March 2014 Statistics - Charcoal Prices by Regions

Region	Maxi Bag			Mini Bag		
	Mean	Median	Mode	Mean	Median	Mode
Eastern	20.33	21.00	21.00	15.00	17.00	9.00
Volta	33.67	32.00	32.00	18.42	15.75	15.00
Central	28.17	28.25	34.00	22.50	19.00	30.00
Western	27.03	27.50	31.50	16.83	17.50	19.00
Ashanti	18.13	17.75	18.00	11.71	12.00	12.50
Brong Ahafo	13.96	14.00	14.00	7.81	8.00	8.00
Northern	20.67	21.25	18.50	11.63	11.50	11.00
Upper East	28.63	31.00	31.50	18.88	18.25	16.50
Upper West	17.25	16.50	16.50	10.83	12.25	12.50
Greater Accra	25.85	25.75	28.00	19.60	19.50	18.00
Ghana	22.89	22.00	22.00	15.07	16.00	18.00

Table 3.10: Average Prices of charcoal in Ghana Cedis per kg by Regions: March 2014

Region	Maxi Bag			Mini Bag		
	Mean	Median	Mode	Mean	Median	Mode
Eastern	0.39	0.40	0.40	0.58	0.65	0.35
Volta	0.64	0.61	0.61	0.71	0.61	0.58
Central	0.47	0.47	0.57	0.71	0.60	0.95
Western	0.51	0.52	0.60	0.65	0.67	0.73
Ashanti	0.35	0.34	0.34	0.45	0.46	0.48
Brong Ahafo	0.24	0.24	0.24	0.25	0.26	0.26
Northern	0.36	0.37	0.32	0.38	0.37	0.35
Upper East	0.50	0.54	0.55	0.61	0.59	0.53
Upper West	0.30	0.29	0.29	0.35	0.40	0.40
Greater Accra	0.43	0.43	0.47	0.62	0.62	0.57

Table 3.11: April 2014 Statistics - Charcoal Prices by Major consuming urban centres

Region	Town	MAXI BAG			MINI BAG		
		MEAN	MEDIAN	MODE	MEAN	MEDIAN	MODE
Eastern	Koforidua	24.63	24.75	25.00	18.63	18.75	19.00
	Akim Oda	21.63	21.75	22.00	17.13	17.00	17.00
	Donkorkrom	15.75	15.75	16.00	9.75	10.00	10.00
Volta	Nkwanta	32.25	32.00	32.00	15.75	15.50	15.00
	Denu	37.50	37.50	37.00	24.38	24.25	24.00
	Ho	31.25	31.00	31.00	15.13	15.00	15.00
Central	Winneba	28.25	28.25	28.00	18.13	18.00	18.00
	Cape-Coast	34.25	34.25	34.00	30.50	30.50	30.00
	Swedru	22.13	22.00	22.00	19.13	19.00	19.00
Western	Axim	32.50	32.50	33.00	18.50	18.50	19.00
	Sekondi	31.50	31.50	32.00	16.50	16.50	16.50
	Takoradi	27.63	27.75	28.00	19.38	19.50	20.00
	Tarkwa	23.50	23.50	24.00	19.75	20.00	20.00
	Juaboso	22.63	22.50	22.50	12.50	12.50	12.50
Ashanti	Konongo	20.88	21.00	21.50	12.50	12.50	12.50
	Kumasi	17.19	17.25	18.00	11.56	11.50	10.50
	Offinso	17.63	17.50	17.50	10.63	10.75	11.00
Brong Ahafo	Nkoranza South	14.00	14.00	14.00	7.00	7.00	7.00
	Atebubu	12.50	12.50	13.00	8.50	8.50	9.00
	Sunyani Municipal	17.75	18.00	18.00	9.63	9.75	10.00
	Techiman	16.00	16.00	16.00	9.50	9.50	9.50
	Jaman North	14.13	14.00	14.00	8.00	8.00	8.00
	Kintampo	11.13	11.00	11.00	6.00	6.00	6.00
Northern	Tamale	23.00	23.00	24.00	11.88	12.00	12.50
	Salaga	20.17	18.50	19.00	11.25	11.50	12.00
	Yendi	21.50	21.50	22.00	12.75	13.00	13.00
Upper East	Navorongo	31.25	31.25	31.00	22.13	22.00	22.00
	Bawku	31.25	31.25	31.50	18.75	19.00	19.00
	Bolga	23.63	23.75	24.00	16.63	16.75	17.00
Upper West	Jirapa	16.38	16.50	16.50	12.25	12.25	12.50
	Sissala East	14.50	14.50	15.00	6.75	6.75	7.00
	Wa	20.88	21.00	21.00	13.50	13.50	13.50
Greater Accra	Ashaiman	22.63	22.75	23.00	18.38	18.50	18.50
	Agbogbloshie	24.38	24.50	24.50	18.50	18.50	18.50
	Mallam Junction	23.75	23.75	24.00	19.00	19.00	19.00
	Accra New Town	27.50	27.50	27.50	22.63	22.50	22.50
	Tema Community 1	28.25	28.25	28.00	20.13	20.00	20.00
	Tema Community 9	29.50	29.50	30.00	20.00	20.00	20.00
Ghana		23.08	22.50	22.00	15.27	16.00	19.00

Table 3.12: April 2014 Statistics - Charcoal Prices by Regions

Region	Maxi Bag			Mini Bag		
	Mean	Median	Mode	Mean	Median	Mode
Eastern	20.67	21.75	16.00	15.17	17.00	10.00
Volta	33.67	32.00	32.00	18.42	15.75	15.00
Central	28.21	28.25	22.00	22.58	19.00	18.00
Western	27.55	27.75	32.00	17.33	18.25	20.00
Ashanti	18.22	18.00	18.00	11.75	12.00	11.00
Brong Ahafo	14.15	14.00	14.00	8.04	8.00	8.00
Northern	21.00	21.50	22.00	11.96	12.00	12.00
Upper East	28.71	31.00	31.50	19.17	19.00	19.00
Upper West	17.25	16.50	16.50	10.83	12.25	12.50
Greater Accra	26.00	25.75	24.50	19.77	19.50	20.00
Ghana	23.08	22.50	22.00	15.27	16.00	19.00

Table 3.13: Average Prices of charcoal in Ghana Cedis per kg by Regions: April 2014

Region	Maxi Bag			Mini Bag		
	Mean	Median	Mode	Mean	Median	Mode
Eastern	0.39	0.41	0.30	0.58	0.65	0.38
Volta	0.64	0.61	0.61	0.71	0.61	0.58
Central	0.47	0.47	0.37	0.72	0.60	0.57
Western	0.52	0.53	0.61	0.67	0.70	0.77
Ashanti	0.35	0.34	0.34	0.45	0.46	0.42
Brong Ahafo	0.25	0.24	0.24	0.26	0.26	0.26
Northern	0.37	0.37	0.38	0.39	0.39	0.39
Upper East	0.50	0.54	0.55	0.62	0.61	0.61
Upper West	0.30	0.29	0.29	0.35	0.40	0.40
Greater Accra	0.43	0.43	0.41	0.63	0.62	0.63

Table 3.14: May 2014 Statistics - Charcoal Prices by Major consuming Urban centres

Region	Town	MAXI BAG			MINI BAG		
		MEAN	MEDIAN	MODE	MEAN	MEDIAN	MODE
Eastern	Koforidua	25.25	25.25	25.00	19.25	19.25	19.00
	Akim Oda	22.50	22.50	22.00	17.50	17.50	17.00
	Donkorkrom	15.75	15.75	16.00	10.13	10.00	10.00
Volta	Nkwanta	32.50	32.50	32.50	15.75	15.50	15.00
	Denu	37.50	37.50	37.00	24.38	24.25	24.00
	Ho	32.50	32.50	33.00	15.38	15.50	15.50
Central	Winneba	27.25	27.25	26.00	18.13	18.00	18.00
	Cape-Coast	34.75	34.75	35.00	30.50	30.50	30.00
	Swedru	22.50	22.50	22.00	19.25	19.25	19.00
Western	Axim	32.50	32.50	33.00	18.50	18.50	19.00
	Sekondi	31.50	31.50	32.00	16.63	16.75	17.00
	Takoradi	28.50	28.50	29.00	19.75	19.75	20.50
	Tarkwa	24.50	24.50	24.00	20.50	20.50	20.00
	Juaboso	22.63	22.50	22.50	12.50	12.50	12.50
Ashanti	Konongo	20.88	21.00	21.50	12.50	12.50	12.50
	Kumasi	17.31	17.25	18.50	11.88	12.00	12.00
	Offinso	17.63	17.50	17.50	10.88	11.00	11.00
Brong Ahafo	Nkoranza South	14.25	14.25	14.00	7.25	7.25	7.00
	Atebubu	12.50	12.50	13.00	8.50	8.50	9.00
	Sunyani Municipal	18.00	18.25	18.50	10.00	10.00	10.50
	Techiman	16.00	16.00	16.00	9.75	9.75	#N/A
	Jaman North	14.13	14.00	14.00	8.25	8.25	8.50
	Kintampo	11.38	11.50	11.50	6.63	6.50	6.00
Northern	Tamale	23.00	23.00	24.00	11.88	12.00	12.50
	Salaga	20.33	18.75	19.50	11.50	11.75	12.50
	Yendi	21.75	22.00	22.00	12.75	13.00	13.00
Upper East	Navorongo	31.25	31.25	31.00	22.13	22.00	22.00
	Bawku	31.25	31.25	31.50	19.50	19.50	20.00
	Bolga	25.50	25.50	26.00	18.50	18.50	19.00
Upper West	Jirapa	16.63	16.75	17.00	12.50	12.50	13.00
	Sissala East	14.50	14.50	15.00	7.25	7.25	7.00
	Wa	20.88	21.00	21.00	13.75	13.75	13.50
Greater Accra	Ashaiman	23.25	23.25	23.50	18.75	18.75	18.50
	Agbogbloshie	24.38	24.50	24.50	18.75	18.50	18.50
	Mallam Junction	24.25	24.25	24.00	19.00	19.00	19.00
	Accra New Town	27.75	28.00	28.00	22.88	23.00	23.00
	Tema Community 1	28.25	28.25	28.00	20.13	20.00	20.00
	Tema Community 9	29.88	30.00	30.00	20.38	20.25	20.00
Ghana		23.34	23.00	22.00	15.54	16.00	19.00

Table 3.15: May 2014 Statistics - Charcoal Prices by Regions

Region	Maxi Bag			Mini Bag		
	Mean	Median	Mode	Mean	Median	Mode
Eastern	21.17	22.50	16.00	15.63	17.50	10.00
Volta	34.17	33.00	33.00	18.50	15.75	15.50
Central	28.17	27.25	35.00	22.63	19.25	18.00
Western	27.93	28.50	32.00	17.58	18.50	19.00
Ashanti	18.28	18.25	18.50	11.93	12.00	12.00
Brong Ahafo	14.29	14.00	14.00	8.33	8.25	9.00
Northern	21.17	22.00	22.00	12.04	12.50	12.50
Upper East	29.33	31.00	31.50	20.04	19.50	19.00
Upper West	17.33	16.75	21.00	11.17	12.50	13.00
Greater Accra	26.29	25.75	24.50	19.98	19.50	19.00
Ghana	23.34	23.00	22.00	15.54	16.00	19.00

Table 3.16: Average Prices of charcoal in Ghana Cedis per kg by Regions: May 2014

Region	Maxi Bag			Mini Bag		
	Mean	Median	Mode	Mean	Median	Mode
Eastern	0.40	0.43	0.30	0.60	0.67	0.38
Volta	0.65	0.63	0.63	0.71	0.61	0.60
Central	0.47	0.45	0.58	0.72	0.61	0.57
Western	0.53	0.54	0.61	0.68	0.71	0.73
Ashanti	0.35	0.35	0.35	0.46	0.46	0.46
Brong Ahafo	0.25	0.24	0.24	0.27	0.27	0.29
Northern	0.37	0.38	0.38	0.39	0.40	0.40
Upper East	0.51	0.54	0.55	0.65	0.63	0.61
Upper West	0.30	0.29	0.37	0.36	0.40	0.42
Greater Accra	0.44	0.43	0.41	0.63	0.62	0.60

Table 3.17: June 2014 Statistics - Charcoal Prices by Major consuming urban centres

Region	Town	MAXI BAG			MINI BAG		
		MEAN	MEDIAN	MODE	MEAN	MEDIAN	MODE
Eastern	Koforidua	25.75	25.75	26.00	19.75	19.75	20.00
	Akim Oda	23.00	23.00	23.00	18.00	18.00	18.00
	Donkorkrom	16.00	16.00	16.50	10.63	10.75	11.00
Volta	Nkwanta	32.50	32.50	32.50	15.75	15.50	15.00
	Denu	38.00	38.00	38.00	24.88	25.00	25.00
	Ho	33.50	33.50	34.00	15.63	15.75	16.00
Central	Winneba	27.25	27.25	26.00	19.13	19.00	19.00
	Cape-Coast	35.50	35.50	36.00	31.25	31.25	31.50
	Swedru	23.25	23.25	23.50	20.75	20.75	21.50
Western	Axim	32.50	32.50	33.00	19.25	19.25	19.00
	Sekondi	32.25	32.25	32.00	16.75	16.75	17.00
	Takoradi	28.50	28.50	29.00	20.25	20.25	20.50
	Tarkwa	25.00	25.00	25.00	21.00	21.00	21.00
	Juaboso	22.88	23.00	23.00	12.75	12.75	13.00
Ashanti	Konongo	21.50	21.50	22.00	12.75	13.00	13.00
	Kumasi	17.44	17.50	18.50	12.13	12.00	12.00
	Offinso	17.88	18.00	18.00	12.00	12.00	12.00
Brong Ahafo	Nkoranza South	14.25	14.25	14.00	7.25	7.25	7.00
	Atebubu	12.75	12.75	13.50	10.00	10.00	10.00
	Sunyani Municipal	18.25	18.50	19.00	10.75	10.75	11.00
	Techiman	16.00	16.00	16.00	10.00	10.00	10.00
	Jaman North	14.13	14.00	14.00	8.00	8.00	8.00
	Kintampo	11.38	11.50	11.50	7.13	7.00	7.00
Northern	Tamale	23.75	23.75	24.50	13.75	14.00	14.00
	Salaga	20.50	19.50	20.00	11.75	11.75	12.50
	Yendi	22.00	22.25	22.50	13.00	13.25	13.50
Upper East	Navorongo	31.75	31.75	32.00	22.25	22.25	22.00
	Bawku	31.50	31.50	32.00	19.50	19.50	20.00
	Bolga	25.50	25.50	26.00	18.50	18.50	19.00
Upper West	Jirapa	16.63	16.75	17.00	12.50	12.50	13.00
	Sissala East	15.50	15.50	16.00	7.75	7.75	7.50
	Wa	21.13	21.25	21.50	14.00	14.00	14.00
Greater Accra	Ashaiman	23.50	23.50	24.00	19.00	19.00	19.00
	Agbogbloshie	24.63	24.75	25.00	19.25	19.00	19.00
	Mallam Junction	24.25	24.25	24.00	19.50	19.50	19.00
	Accra New Town	27.75	28.00	28.00	22.88	23.00	23.00
	Tema Community 1	28.50	28.50	28.50	20.25	20.25	20.00
	Tema Community 9	29.88	30.00	30.00	20.38	20.25	20.00
Ghana		23.66	23.25	23.00	15.97	16.00	19.00

Table 3.18: June 2014 Statistics - Charcoal Prices by Regions

Region	Maxi Bag			Mini Bag		
	Mean	Median	Mode	Mean	Median	Mode
Eastern	21.58	23.00	23.00	16.13	18.00	18.00
Volta	34.67	33.50	38.00	18.75	16.00	16.00
Central	28.67	27.25	36.00	23.71	20.75	20.00
Western	28.23	28.50	32.00	18.00	19.25	21.00
Ashanti	18.56	18.50	18.50	12.29	12.00	12.00
Brong Ahafo	14.50	14.00	14.00	8.81	8.50	10.00
Northern	21.75	22.25	20.00	12.83	13.00	14.00
Upper East	29.58	31.25	32.00	20.08	19.50	19.00
Upper West	17.75	16.75	16.00	11.42	12.50	14.00
Greater Accra	26.42	26.00	24.00	20.21	20.00	19.00
Ghana	23.66	23.25	23.00	15.97	16.00	19.00

Table 3.19: Average Prices of charcoal in Ghana Cedis per kg by Regions: June 2014

Region	Maxi Bag			Mini Bag		
	Mean	Median	Mode	Mean	Median	Mode
Eastern	0.41	0.44	0.44	0.62	0.69	0.69
Volta	0.66	0.64	0.72	0.72	0.62	0.62
Central	0.48	0.45	0.60	0.75	0.66	0.63
Western	0.54	0.54	0.61	0.69	0.74	0.81
Ashanti	0.35	0.35	0.35	0.47	0.46	0.46
Brong Ahafo	0.25	0.24	0.24	0.28	0.27	0.32
Northern	0.38	0.39	0.35	0.41	0.42	0.45
Upper East	0.51	0.54	0.56	0.65	0.63	0.61
Upper West	0.31	0.29	0.28	0.37	0.40	0.45
Greater Accra	0.44	0.43	0.40	0.64	0.63	0.60

Table 3.20: July 2014 Statistics - Charcoal Prices by Major consuming urban centres

Region	Town	MAXI BAG			MINI BAG		
		MEAN	MEDIAN	MODE	MEAN	MEDIAN	MODE
Eastern	Koforidua	25.75	25.75	26.00	20.50	20.50	20.00
	Akim Oda	23.50	23.50	24.00	18.50	18.50	19.00
	Donkorkrom	17.00	17.00	18.00	11.50	11.50	12.00
Volta	Nkwanta	32.75	33.00	33.00	17.25	17.50	18.00
	Denu	39.00	39.00	40.00	29.00	29.00	30.00
	Ho	37.00	37.00	38.00	18.50	18.50	19.00
Central	Winneba	27.25	27.25	26.00	19.13	19.00	19.00
	Cape-Coast	37.50	37.50	40.00	30.50	30.50	30.00
	Swedru	23.50	23.50	24.00	21.50	21.50	22.00
Western	Axim	33.00	33.00	34.00	19.75	19.75	20.00
	Sekondi	32.75	32.75	33.00	17.38	17.50	18.00
	Takoradi	29.50	29.50	31.00	20.50	20.50	21.00
	Tarkwa	25.50	25.50	26.00	21.00	21.00	21.00
	Juaboso	23.38	23.50	24.00	13.25	13.25	14.00
Ashanti	Konongo	22.50	22.50	23.00	13.75	14.00	14.00
	Kumasi	18.00	18.25	19.00	12.94	13.00	13.00
	Offinso	18.25	18.00	18.00	12.00	12.00	12.00
Brong Ahafo	Nkoranza South	14.25	14.25	14.00	7.50	7.50	7.50
	Atebubu	14.50	14.50	15.00	10.50	10.50	11.00
	Sunyani Municipal	21.50	21.50	23.00	11.38	11.50	12.00
	Techiman	17.00	17.00	17.00	11.00	11.00	11.00
	Jaman North	14.38	14.50	14.50	8.50	8.50	9.00
	Kintampo	12.50	12.50	13.00	7.00	7.00	7.00
Northern	Tamale	24.50	24.50	26.00	14.25	14.50	15.00
	Salaga	20.83	20.00	21.00	12.00	12.00	13.00
	Yendi	23.25	23.25	22.50	13.75	13.75	13.50
Upper East	Navorongo	31.75	31.75	32.00	22.25	22.25	22.00
	Bawku	32.50	32.50	33.00	20.50	20.50	21.00
	Bolga	27.00	27.00	28.00	19.50	19.50	20.00
Upper West	Jirapa	17.50	17.50	17.00	12.50	12.50	13.00
	Sissala East	16.50	16.50	16.00	8.50	8.50	9.00
	Wa	21.13	21.25	21.50	14.00	14.00	14.00
Greater Accra	Ashaiman	26.00	26.00	27.00	22.00	19.50	20.00
	Agbogbloshie	25.50	25.50	26.00	19.50	23.00	23.00
	Mallam Junction	24.25	24.25	24.00	19.50	19.50	19.00
	Accra New Town	29.00	29.00	30.00	22.88	23.00	23.00
	Tema Community 1	28.75	28.75	29.00	21.50	21.50	22.00
	Tema Community 9	33.50	33.50	34.00	24.50	24.50	25.00
Ghana		24.59	24.00	26.00	16.75	18.00	21.00

Table 3.21: July 2014 Statistics - Charcoal Prices by Regions

Region	Maxi Bag			Mini Bag		
	Mean	Median	Mode	Mean	Median	Mode
Eastern	22.08	23.50	18.00	16.83	18.50	12.00
Volta	36.25	37.00	38.00	21.58	18.50	18.00
Central	29.42	27.25	40.00	23.71	21.50	30.00
Western	28.83	29.50	34.00	18.38	19.75	21.00
Ashanti	19.19	18.50	18.00	13.04	13.00	14.00
Brong Ahafo	15.65	14.50	14.00	9.23	9.50	11.00
Northern	22.58	22.75	21.00	13.33	13.50	13.00
Upper East	30.42	31.75	32.00	20.75	20.50	20.00
Upper West	18.38	17.50	17.00	11.67	12.50	14.00
Greater Accra	27.83	27.50	25.00	21.65	21.50	23.00
Ghana	24.59	24.00	26.00	16.75	18.00	21.00

Table 3.22: Average Prices of charcoal in Ghana Cedis per kg by Regions: July 2014

Region	Maxi Bag			Mini Bag		
	Mean	Median	Mode	Mean	Median	Mode
Eastern	0.42	0.45	0.34	0.65	0.71	0.46
Volta	0.69	0.70	0.72	0.83	0.71	0.69
Central	0.49	0.45	0.67	0.75	0.68	0.95
Western	0.55	0.56	0.65	0.71	0.76	0.81
Ashanti	0.37	0.35	0.34	0.50	0.50	0.54
Brong Ahafo	0.27	0.25	0.24	0.30	0.31	0.35
Northern	0.39	0.40	0.37	0.43	0.44	0.42
Upper East	0.53	0.55	0.56	0.67	0.66	0.65
Upper West	0.32	0.30	0.30	0.38	0.40	0.45
Greater Accra	0.46	0.46	0.42	0.69	0.68	0.73

Table 3.23: August 2014 Statistics - Charcoal Prices by Major consuming urban centres

Region	Town	MAXI BAG			MINI BAG		
		MEAN	MEDIAN	MODE	MEAN	MEDIAN	MODE
Eastern	Koforidua	25.75	25.75	26.00	21.00	21.00	21.00
	Akim Oda	23.50	23.50	24.00	18.50	18.50	19.00
	Donkorkrom	17.00	17.00	18.00	11.50	11.50	12.00
Volta	Nkwanta	32.75	33.00	33.00	17.25	17.50	18.00
	Denu	40.00	40.00	40.00	29.00	29.00	30.00
	Ho	37.00	37.00	38.00	18.50	18.50	19.00
Central	Winneba	27.50	27.75	28.50	18.88	18.75	#N/A
	Cape-Coast	42.25	42.50	43.00	29.50	29.50	30.00
	Swedru	24.25	24.50	25.00	21.75	22.00	22.00
Western	Axim	33.00	33.00	34.00	19.75	19.75	20.00
	Sekondi	32.75	32.75	33.00	17.38	17.50	18.00
	Takoradi	29.50	29.50	31.00	20.50	20.50	21.00
	Tarkwa	25.50	25.50	26.00	21.00	21.00	21.00
	Juaboso	23.38	23.50	24.00	13.25	13.25	14.00
Ashanti	Konongo	23.00	23.00	24.00	13.25	13.00	13.00
	Kumasi	18.00	18.25	19.00	12.94	13.00	13.00
	Offinso	18.50	18.50	18.00	12.25	12.00	12.00
Brong Ahafo	Nkoranza South	14.75	14.75	15.00	7.50	7.50	7.50
	Atebubu	14.50	14.50	15.00	10.50	10.50	11.00
	Sunyani Municipal	23.25	23.00	23.00	12.13	12.00	12.00
	Techiman	20.00	20.00	20.00	12.50	12.50	12.50
	Jaman North	14.63	14.75	15.00	9.50	9.50	9.00
	Kintampo	14.63	14.75	15.00	7.75	7.75	7.50
Northern	Tamale	25.00	25.00	26.00	14.25	14.50	15.00
	Salaga	20.83	21.50	21.00	12.00	12.00	13.00
	Yendi	23.25	23.25	22.50	13.75	13.75	13.50
Upper East	Navorongo	31.75	31.75	32.00	22.25	22.25	22.00
	Bawku	32.50	32.50	33.00	20.50	20.50	21.00
	Bolga	27.00	27.00	28.00	19.50	19.50	20.00
Upper West	Jirapa	17.50	17.50	17.00	12.50	12.50	13.00
	Sissala East	16.50	16.50	16.00	9.50	9.50	9.00
	Wa	21.13	21.25	21.50	14.00	14.00	14.00
Greater Accra	Ashaiman	35.00	35.00	36.00	21.50	22.50	23.00
	Agbogbloshie	29.00	29.00	30.00	22.50	22.00	22.00
	Mallam Junction	27.50	27.50	28.00	21.25	21.50	22.00
	Accra New Town	39.25	39.50	40.00	26.25	26.50	27.00
	Tema Community 1	39.00	39.00	38.00	30.50	30.50	30.00
	Tema Community 9	38.50	38.50	40.00	31.25	31.50	32.00
Ghana		26.07	25.00	24.00	17.46	18.00	21.00

Table 3.24: August 2014 Statistics - Charcoal Prices by Regions

Region	Maxi Bag			Mini Bag		
	Mean	Median	Mode	Mean	Median	Mode
Eastern	22.08	23.50	18.00	17.00	18.50	21.00
Volta	36.58	37.00	40.00	21.58	18.50	18.00
Central	31.33	27.75	43.00	23.38	22.00	22.00
Western	28.83	29.50	34.00	18.38	19.75	21.00
Ashanti	19.38	18.50	18.00	12.89	13.00	13.00
Brong Ahafo	16.77	15.00	15.00	9.92	10.00	7.50
Northern	23.25	23.25	24.00	13.33	13.50	13.00
Upper East	30.42	31.75	32.00	20.75	20.50	20.00
Upper West	18.38	17.50	17.00	12.00	12.50	14.00
Greater Accra	34.71	36.50	40.00	25.54	24.00	22.00
Ghana	26.07	25.00	24.00	17.46	18.00	21.00

Table 3.25: Average Prices of charcoal in Ghana Cedis per kg by Regions: August 2014

Region	Maxi Bag			Mini Bag		
	Mean	Median	Mode	Mean	Median	Mode
Eastern	0.42	0.45	0.34	0.65	0.71	0.81
Volta	0.70	0.70	0.76	0.83	0.71	0.69
Central	0.52	0.46	0.72	0.74	0.70	0.70
Western	0.55	0.56	0.65	0.71	0.76	0.81
Ashanti	0.37	0.35	0.34	0.50	0.50	0.50
Brong Ahafo	0.29	0.26	0.26	0.32	0.32	0.24
Northern	0.40	0.40	0.42	0.43	0.44	0.42
Upper East	0.53	0.55	0.56	0.67	0.66	0.65
Upper West	0.32	0.30	0.30	0.39	0.40	0.45
Greater Accra	0.58	0.61	0.67	0.81	0.76	0.70

Table 3.26: September 2014 Statistics - Charcoal Prices by Major consuming urban centres

Region	Town	MAXI BAG			MINI BAG		
		MEAN	MEDIAN	MODE	MEAN	MEDIAN	MODE
Eastern	Koforidua	28.25	28.00	28.00	21.88	22.00	22.00
	Akim Oda	24.75	24.75	25.00	20.00	20.00	20.00
	Donkorkrom	19.25	19.00	19.00	13.63	13.50	13.50
Volta	Nkwanta	33.25	33.00	33.00	19.25	19.00	19.00
	Denu	41.50	41.50	42.00	30.25	30.00	30.00
	Ho	39.63	39.75	40.00	20.50	20.50	20.00
Central	Winneba	28.00	28.00	28.00	21.50	21.50	21.00
	Cape-Coast	44.75	44.75	45.00	29.88	30.00	30.00
	Swedru	28.50	28.50	28.00	21.75	22.00	22.00
Western	Axim	34.25	34.25	34.00	21.38	21.25	21.00
	Sekondi	33.50	33.50	33.00	20.00	20.00	20.00
	Takoradi	33.13	33.00	33.00	21.88	22.00	22.00
	Tarkwa	26.00	26.25	26.50	21.00	21.00	21.00
	Juaboso	23.50	23.25	23.00	14.88	15.00	15.00
Ashanti	Konongo	26.00	26.25	26.50	14.75	14.75	15.00
	Kumasi	19.38	19.00	19.00	13.88	14.00	14.00
	Offinso	20.25	20.00	20.00	15.25	15.00	15.00
Brong Ahafo	Nkoranza South	14.50	14.50	14.00	7.50	7.50	7.00
	Atebubu	14.75	15.00	15.00	11.13	11.00	11.00
	Sunyani Municipal	24.25	24.00	24.00	14.38	14.25	14.00
	Techiman	20.50	20.50	20.00	12.50	12.50	12.50
	Jaman North	15.38	15.25	15.00	10.50	10.50	10.50
	Kintampo	16.13	16.00	16.00	8.38	8.25	8.00
Northern	Tamale	25.00	25.00	25.00	14.75	15.00	15.00
	Salaga	22.33	22.00	22.00	13.50	13.50	13.50
	Yendi	23.50	23.50	24.00	14.25	14.00	14.00
Upper East	Navorongo	32.63	32.75	33.00	22.63	22.75	23.00
	Bawku	31.50	31.50	32.00	19.75	20.00	20.00
	Bolga	35.88	36.00	36.00	21.75	22.00	22.00
Upper West	Jirapa	19.63	19.75	20.00	13.75	13.75	13.50
	Sissala East	18.25	18.00	18.00	10.88	11.00	11.00
	Wa	22.50	22.50	23.00	15.25	15.00	15.00
Greater Accra	Ashaiman	36.13	36.00	36.00	21.63	22.50	23.00
	Agbogbloshie	30.00	30.00	30.00	22.50	22.00	22.00
	Mallam Junction	28.00	28.00	28.00	23.13	23.00	23.00
	Accra New Town	39.50	39.50	40.00	26.88	27.00	27.00
	Tema Community 1	39.75	39.75	40.00	30.50	30.50	31.00
	Tema Community 9	40.00	40.00	40.00	31.75	31.75	32.00
Ghana		27.51	26.50	28.00	18.54	19.50	22.00

Table 3.27: September 2014 Statistics - Charcoal Prices by Regions

Region	Maxi Bag			Mini Bag		
	Mean	Median	Mode	Mean	Median	Mode
Eastern	24.08	24.75	19.00	18.50	20.00	13.50
Volta	38.13	39.75	33.00	23.33	20.50	20.00
Central	33.75	28.50	28.00	24.38	22.00	22.00
Western	30.08	33.00	33.00	19.83	21.00	21.00
Ashanti	21.25	20.00	19.00	14.36	14.25	14.00
Brong Ahafo	17.58	16.00	15.00	10.75	11.00	11.00
Northern	23.46	23.50	24.00	14.17	14.00	14.00
Upper East	33.33	32.75	32.00	21.38	22.00	22.00
Upper West	20.13	19.75	18.00	13.29	13.75	11.00
Greater Accra	35.56	37.75	40.00	26.06	25.00	23.00
Ghana	27.51	26.50	28.00	18.54	19.50	22.00

Table 3.28: Average Prices of charcoal in Ghana Cedis per kg by Regions: September 2014

Region	Maxi Bag			Mini Bag		
	Mean	Median	Mode	Mean	Median	Mode
Eastern	0.46	0.47	0.36	0.71	0.77	0.52
Volta	0.73	0.76	0.63	0.90	0.79	0.77
Central	0.56	0.48	0.47	0.77	0.70	0.70
Western	0.57	0.63	0.63	0.76	0.81	0.81
Ashanti	0.40	0.38	0.36	0.55	0.55	0.54
Brong Ahafo	0.31	0.28	0.26	0.35	0.35	0.35
Northern	0.41	0.41	0.42	0.46	0.45	0.45
Upper East	0.58	0.57	0.56	0.69	0.71	0.71
Upper West	0.35	0.34	0.31	0.43	0.44	0.35
Greater Accra	0.59	0.63	0.67	0.83	0.79	0.73

Table 3.29: October 2014 Statistics - Charcoal Prices by Major consuming urban centres

Region	Town	MAXI BAG			MINI BAG		
		MEAN	MEDIAN	MODE	MEAN	MEDIAN	MODE
Eastern	Koforidua	28.25	28.00	28.00	21.88	22.00	22.00
	Akim Oda	24.75	25.00	25.00	19.75	20.00	20.00
	Donkorkrom	19.50	19.50	20.00	13.63	13.50	13.50
Volta	Nkwanta	33.25	33.00	33.00	19.25	19.00	19.00
	Denu	44.00	44.00	45.00	30.00	30.00	30.00
	Ho	39.75	40.00	40.00	20.25	20.00	20.00
Central	Winneba	27.75	27.75	28.00	21.50	21.50	21.00
	Cape-Coast	44.63	44.75	45.00	29.88	30.00	30.00
	Swedru	28.50	28.50	28.00	21.75	22.00	22.00
Western	Axim	34.38	34.25	34.00	21.38	21.25	21.00
	Sekondi	33.38	33.25	33.00	19.75	20.00	20.00
	Takoradi	33.13	33.00	33.00	21.75	22.00	22.00
	Tarkwa	26.50	26.50	26.50	20.75	21.00	21.00
	Juaboso	24.88	25.00	25.00	14.88	15.00	15.00
Ashanti	Konongo	25.88	26.00	26.00	14.63	14.75	15.00
	Kumasi	19.25	19.00	19.00	13.75	14.00	14.00
	Offinso	21.63	21.75	22.00	15.25	15.00	15.00
Brong Ahafo	Nkoranza South	14.38	14.25	14.00	7.63	7.75	8.00
	Atebubu	15.13	15.00	15.00	11.38	11.25	11.00
	Sunyani Municipal	27.25	27.00	27.00	14.38	14.25	14.00
	Techiman	20.00	20.00	20.00	12.50	12.50	12.50
	Jaman North	15.38	15.25	15.00	10.38	10.25	10.00
	Kintampo	16.38	16.25	16.00	8.50	8.50	8.50
Northern	Tamale	25.75	26.00	26.00	14.75	15.00	15.00
	Salaga	22.67	22.00	22.00	13.38	13.50	13.50
	Yendi	23.75	24.00	24.00	14.25	14.00	14.00
Upper East	Navorongo	32.75	33.00	33.00	23.38	23.25	23.00
	Bawku	31.75	32.00	32.00	20.38	20.25	20.00
	Bolga	35.75	36.00	36.00	21.75	22.00	22.00
Upper West	Jirapa	19.75	20.00	20.00	13.63	13.50	13.50
	Sissala East	18.38	18.25	18.00	10.88	11.00	11.00
	Wa	22.75	23.00	23.00	15.25	15.00	15.00
Greater Accra	Ashaiman	37.50	37.50	37.00	21.63	22.50	23.00
	Agbogbloshie	36.50	36.50	37.00	22.50	22.00	22.00
	Mallam Junction	29.75	29.75	29.50	23.25	23.25	23.00
	Accra New Town	39.50	39.50	40.00	27.25	27.00	27.00
	Tema Community 1	38.75	38.75	38.00	30.50	30.50	31.00
	Tema Community 9	38.50	38.50	38.00	31.75	31.75	32.00
Ghana		27.96	27.00	33.00	18.54	20.00	22.00

Table 3.30: October 2014 Statistics - Charcoal Prices by Regions

Region	Maxi Bag			Mini Bag		
	Mean	Median	Mode	Mean	Median	Mode
Eastern	24.17	25.00	28.00	18.42	20.00	13.50
Volta	39.00	40.00	40.00	23.17	20.00	20.00
Central	33.63	28.50	28.00	24.38	22.00	22.00
Western	30.45	33.00	33.00	19.70	21.00	21.00
Ashanti	21.50	20.00	19.00	14.25	14.00	14.00
Brong Ahafo	18.17	16.00	15.00	10.83	11.00	11.00
Northern	23.75	24.00	22.00	14.13	14.00	15.00
Upper East	33.42	33.00	32.00	21.83	22.00	22.00
Upper West	20.29	20.00	20.00	13.25	13.50	13.50
Greater Accra	36.75	38.00	38.00	26.15	25.25	22.00
Ghana	27.96	27.00	33.00	18.54	20.00	22.00

Table 3.31: Average Prices of charcoal in Ghana Cedis per kg by Regions: October 2014

Region	Maxi Bag			Mini Bag		
	Mean	Median	Mode	Mean	Median	Mode
Eastern	0.46	0.48	0.53	0.71	0.77	0.52
Volta	0.74	0.76	0.76	0.89	0.77	0.77
Central	0.56	0.48	0.47	0.77	0.70	0.70
Western	0.58	0.63	0.63	0.76	0.81	0.81
Ashanti	0.41	0.38	0.36	0.55	0.54	0.54
Brong Ahafo	0.32	0.28	0.26	0.35	0.35	0.35
Northern	0.41	0.42	0.38	0.46	0.45	0.48
Upper East	0.58	0.57	0.56	0.70	0.71	0.71
Upper West	0.35	0.35	0.35	0.43	0.44	0.44
Greater Accra	0.61	0.63	0.63	0.83	0.80	0.70

Table 3.32: November 2014 Statistics - Charcoal Prices by Major consuming urban centres

Region	Town	MAXI BAG			MINI BAG		
		MEAN	MEDIAN	MODE	MEAN	MEDIAN	MODE
Eastern	Koforidua	28.50	28.50	28.00	21.88	22.00	22.00
	Akim Oda	24.63	24.75	25.00	20.00	20.00	20.00
	Donkorkrom	21.38	21.25	21.00	13.63	13.50	13.50
Volta	Nkwanta	33.50	33.50	33.00	19.25	19.00	19.00
	Denu	45.75	45.50	45.00	30.25	30.00	30.00
	Ho	39.63	39.75	40.00	20.50	20.50	20.00
Central	Winneba	28.50	28.50	28.00	21.50	21.50	21.00
	Cape-Coast	49.50	49.50	50.00	31.75	32.00	32.00
	Swedru	34.25	34.00	34.00	21.75	22.00	22.00
Western	Axim	34.50	34.50	34.50	21.38	21.25	21.00
	Sekondi	33.63	33.75	34.00	20.00	20.00	20.00
	Takoradi	33.25	33.25	33.00	21.88	22.00	22.00
	Tarkwa	26.25	26.50	26.50	21.00	21.00	21.00
	Juaboso	25.00	25.00	25.00	14.88	15.00	15.00
Ashanti	Konongo	22.00	22.00	22.00	12.50	12.50	12.00
	Kumasi	19.50	19.50	19.00	13.88	14.00	14.00
	Offinso	21.75	21.75	22.00	15.25	15.00	15.00
Brong Ahafo	Nkoranza South	14.75	15.00	15.00	7.50	7.50	7.50
	Atebubu	15.75	16.00	16.00	11.50	11.50	11.50
	Sunyani Municipal	28.50	28.50	28.00	14.38	14.25	14.00
	Techiman	21.50	21.50	21.00	12.75	12.75	13.00
	Jaman North	17.00	17.00	17.00	10.75	10.75	11.00
	Kintampo	16.00	16.00	16.00	7.50	7.50	7.00
Northern	Tamale	25.50	25.50	26.00	14.75	15.00	15.00
	Salaga	22.67	22.00	22.00	13.50	13.50	13.50
	Yendi	23.50	23.50	24.00	14.25	14.00	14.00
Upper East	Navorongo	32.88	32.75	32.50	23.38	23.25	23.00
	Bawku	31.75	32.00	32.00	20.63	20.75	21.00
	Bolga	35.88	36.00	36.00	22.00	22.00	22.00
Upper West	Jirapa	19.50	19.50	20.00	13.88	14.00	14.00
	Sissala East	18.13	18.00	18.00	12.13	12.00	12.00
	Wa	22.75	23.00	23.00	15.25	15.00	15.00
Greater Accra	Ashaiman	37.88	38.00	38.00	21.75	22.50	23.00
	Agbogbloshie	36.50	36.50	37.00	22.50	22.00	22.00
	Mallam Junction	29.63	29.75	30.00	23.25	23.25	23.00
	Accra New Town	39.50	39.50	40.00	27.25	27.00	27.00
	Tema Community 1	39.00	39.25	39.50	30.50	30.50	31.00
	Tema Community 9	38.88	39.00	39.00	31.88	32.00	32.00
Ghana		28.39	28.00	34.00	18.63	20.00	22.00

Table 3.33: November 2014 Statistics - Charcoal Prices by Regions

Region	Maxi Bag			Mini Bag		
	Mean	Median	Mode	Mean	Median	Mode
Eastern	24.83	24.75	21.00	18.50	20.00	13.50
Volta	39.63	39.75	40.00	23.33	20.50	20.00
Central	37.42	34.00	34.00	25.00	22.00	22.00
Western	30.53	33.00	34.00	19.83	21.00	21.00
Ashanti	20.69	20.00	19.00	13.71	14.00	14.00
Brong Ahafo	18.88	16.50	16.00	10.75	11.00	11.00
Northern	23.63	23.50	22.00	14.17	14.00	14.00
Upper East	33.50	32.75	32.00	22.00	22.00	22.00
Upper West	20.13	19.50	19.00	13.75	14.00	14.00
Greater Accra	36.90	38.00	38.00	26.19	25.25	22.00
Ghana	28.39	28.00	34.00	18.63	20.00	22.00

Table 3.34: Average Prices of charcoal in Ghana Cedis per kg by Regions: November 2014

Region	Maxi Bag			Mini Bag		
	Mean	Median	Mode	Mean	Median	Mode
Eastern	0.47	0.47	0.40	0.71	0.77	0.52
Volta	0.75	0.76	0.76	0.90	0.79	0.77
Central	0.62	0.57	0.57	0.79	0.70	0.70
Western	0.58	0.63	0.65	0.76	0.81	0.81
Ashanti	0.39	0.38	0.36	0.53	0.54	0.54
Brong Ahafo	0.33	0.29	0.28	0.35	0.35	0.35
Northern	0.41	0.41	0.38	0.46	0.45	0.45
Upper East	0.58	0.57	0.56	0.71	0.71	0.71
Upper West	0.35	0.34	0.33	0.44	0.45	0.45
Greater Accra	0.61	0.63	0.63	0.83	0.80	0.70

Table 3.35: December 2014 Statistics - Charcoal Prices by Major consuming urban centres

Region	Town	MAXI BAG			MINI BAG		
		MEAN	MEDIAN	MODE	MEAN	MEDIAN	MODE
Eastern	Koforidua	29.50	29.50	30.00	22.00	22.00	22.00
	Akim Oda	24.63	24.75	25.00	20.25	20.00	20.00
	Donkorkrom	21.63	21.25	21.00	13.75	13.75	13.50
Volta	Nkwanta	33.50	33.50	33.00	20.00	20.00	20.00
	Denu	53.25	53.50	54.00	30.25	30.00	30.00
	Ho	39.63	39.75	40.00	20.50	20.50	20.00
Central	Winneba	28.00	28.00	28.00	21.50	21.50	21.00
	Cape-Coast	51.25	51.50	52.00	32.50	32.50	30.00
	Swedru	34.75	35.00	35.00	21.75	22.00	22.00
Western	Axim	34.13	34.00	34.00	21.38	21.25	21.00
	Sekondi	33.63	33.75	34.00	20.25	20.00	20.00
	Takoradi	33.25	33.25	33.00	21.88	22.00	22.00
	Tarkwa	26.25	26.50	26.50	21.25	21.25	21.50
	Juaboso	25.00	25.00	25.00	14.88	15.00	15.00
Ashanti	Konongo	22.25	22.50	23.00	13.75	13.75	14.00
	Kumasi	19.50	19.50	19.00	14.00	14.00	14.00
	Offinso	22.13	22.00	22.00	15.75	16.00	16.00
Brong Ahafo	Nkoranza South	14.75	15.00	15.00	8.00	8.00	8.00
	Atebubu	15.75	16.00	16.00	11.88	12.00	12.00
	Sunyani Municipal	28.50	28.50	28.00	14.88	15.00	15.00
	Techiman	21.50	21.50	21.00	12.75	12.75	13.00
	Jaman North	16.63	17.00	17.00	11.38	11.25	11.00
	Kintampo	16.00	16.00	16.00	7.75	8.00	8.00
Northern	Tamale	25.50	25.50	26.00	14.75	15.00	15.00
	Salaga	22.67	22.00	22.00	13.75	13.75	13.50
	Yendi	23.50	23.50	24.00	15.25	15.50	16.00
Upper East	Navorongo	32.88	32.75	32.50	23.38	23.25	23.00
	Bawku	31.75	32.00	32.00	20.63	20.75	21.00
	Bolga	35.88	36.00	36.00	21.75	22.00	22.00
Upper West	Jirapa	19.50	19.50	20.00	13.88	14.00	14.00
	Sissala East	18.25	18.00	18.00	12.38	12.25	12.00
	Wa	22.75	23.00	23.00	15.25	15.00	15.00
Greater Accra	Ashaiman	38.38	38.25	38.00	22.50	22.75	23.00
	Agbogbloshie	37.00	37.00	38.00	22.63	22.00	22.00
	Mallam Junction	29.75	29.75	30.00	23.25	23.25	23.00
	Accra New Town	39.75	40.00	40.00	27.25	27.00	27.00
	Tema Community 1	38.88	39.00	39.50	31.63	31.75	32.00
	Tema Community 9	38.88	39.00	39.00	32.38	32.25	32.00
Ghana		28.70	28.00	23.00	18.90	20.00	22.00

Table 3.36: December 2014 Statistics - Charcoal Prices by Regions

Region	Maxi Bag			Mini Bag		
	Mean	Median	Mode	Mean	Median	Mode
Eastern	25.25	24.75	21.00	18.67	20.00	20.00
Volta	42.13	39.75	40.00	23.58	20.50	20.00
Central	38.00	35.00	35.00	25.25	22.00	22.00
Western	30.45	33.00	34.00	19.93	21.00	21.00
Ashanti	20.84	20.00	19.00	14.14	14.00	14.00
Brong Ahafo	18.81	16.50	15.00	11.13	11.75	8.00
Northern	23.71	23.50	22.00	14.58	14.50	14.00
Upper East	33.50	32.75	32.00	21.92	22.00	21.00
Upper West	20.17	19.50	19.00	13.83	14.00	14.00
Greater Accra	37.10	38.25	38.00	26.60	25.25	23.00
Ghana	28.70	28.00	23.00	18.90	20.00	22.00

Table 3.37: Average Prices of charcoal in Ghana Cedis per kg by Regions: December 2014

Region	Maxi Bag			Mini Bag		
	Mean	Median	Mode	Mean	Median	Mode
Eastern	0.48	0.47	0.40	0.72	0.77	0.77
Volta	0.80	0.76	0.76	0.91	0.79	0.77
Central	0.63	0.58	0.58	0.80	0.70	0.70
Western	0.58	0.63	0.65	0.77	0.81	0.81
Ashanti	0.40	0.38	0.36	0.54	0.54	0.54
Brong Ahafo	0.33	0.29	0.26	0.36	0.38	0.26
Northern	0.41	0.41	0.38	0.47	0.47	0.45
Upper East	0.58	0.57	0.56	0.71	0.71	0.68
Upper West	0.35	0.34	0.33	0.45	0.45	0.45
Greater Accra	0.62	0.64	0.63	0.84	0.80	0.73

Table 3.38: January – December 2014 Statistics - Charcoal Prices by Major consuming urban centres

REGION	TOWN	MAXI BAG			MINI BAG		
		MEAN	MEDIAN	MODE	MEAN	MEDIAN	MODE
Eastern	Koforidua	26.21	25.50	24.00	20.14	20.00	22.00
	Akim Oda	23.01	23.00	21.00	18.42	18.00	17.00
	Donkorkrom	17.41	16.00	15.50	11.30	11.00	9.00
Volta	Nkwanta	32.83	33.00	33.00	17.31	17.00	16.00
	Denu	41.06	40.00	38.00	27.17	26.50	30.00
	Ho	35.39	35.00	32.00	17.52	17.00	15.00
Central	Winneba	27.86	28.00	28.00	19.48	18.75	18.00
	Cape-Coast	39.73	35.50	34.00	30.58	30.00	30.00
	Swedru	25.67	23.00	22.00	20.54	21.00	22.00
Western	Axim	32.89	33.00	32.00	19.33	19.50	21.00
	Sekondi	32.20	32.50	33.00	17.80	17.00	17.00
	Takoradi	29.83	28.50	28.00	20.22	20.25	22.00
	Tarkwa	24.60	25.00	25.00	20.25	21.00	21.00
	Juaboso	23.38	23.00	22.50	13.39	12.50	12.50
Ashanti	Konongo	22.17	21.75	20.00	13.11	13.00	13.00
	Kumasi	18.04	18.25	19.00	12.60	12.50	12.00
	Offinso	19.04	18.00	17.50	12.51	12.00	12.00
Brong Ahafo	Nkoranza South	14.00	14.00	14.00	7.20	7.25	7.00
	Atebubu	13.65	13.75	12.00	9.81	10.00	8.00
	Sunyani Municipal	21.56	19.50	17.00	11.48	11.00	8.50
	Techiman	17.56	16.50	15.00	10.72	10.00	9.00
	Jaman North	14.84	14.50	14.00	9.09	8.25	8.00
	Kintampo	13.24	11.75	11.00	6.99	7.00	6.00
Northern	Tamale	23.96	24.00	22.00	13.22	14.00	15.00
	Salaga	20.02	19.75	18.00	11.99	12.25	11.00
	Yendi	22.46	22.50	24.00	13.44	13.50	14.00
Upper East	Navrongo	31.86	31.50	31.50	22.45	22.00	22.00
	Bawku	31.63	31.50	31.00	19.56	20.00	20.00
	Bolgatanga	28.47	26.00	36.00	19.04	19.00	22.00
Upper West	Jirapa	17.68	17.00	16.50	12.80	12.75	12.00
	Sissala East	15.76	16.00	18.00	8.76	8.00	6.50
	Wa	21.59	21.00	21.00	14.20	14.00	14.00
Greater Accra	Ashaiman	28.81	24.50	22.00	20.10	20.00	22.00
	Agbogbloshie	28.34	25.00	24.00	20.11	19.00	23.00
	Mallam Junction	25.74	24.50	24.00	20.34	19.50	19.00
	Accra New Town	32.59	28.00	28.00	24.46	23.00	27.00
	Tema Community 1	32.77	28.50	28.00	24.67	20.75	20.00
	Tema Community 9	33.29	31.50	30.00	24.73	22.50	20.00
Ghana	Country Average	25.11	24.00	22.00	16.66	16.50	20.00

Table 3.39: January - December 2014 Statistics - Charcoal Prices by Regions

REGION	MAXI BAG			MINI BAG		
	MEAN	MEDIAN	MODE	MEAN	MEDIAN	MODE
Eastern	22.21	23.00	24.00	16.62	18.00	18.00
Volta	36.43	35.00	33.00	20.67	19.00	15.00
Central	31.09	28.50	28.00	23.53	22.00	30.00
Western	28.58	28.50	33.00	18.20	19.00	21.00
Ashanti	19.32	19.00	18.00	12.71	12.50	12.00
Brong Ahafo	15.81	15.00	14.00	9.22	8.50	8.00
Northern	22.15	22.00	22.00	12.88	13.00	14.00
Upper East	30.65	31.50	31.00	20.35	21.00	22.00
Upper West	18.25	18.00	21.00	11.86	12.50	12.00
Greater Accra	30.26	28.50	28.00	22.42	22.00	20.00
Country Average	25.11	24.00	22.00	16.66	16.50	20.00

Table 3.40: Average Prices of charcoal in Ghana Cedis per kg by Regions: January - December 2014

REGION	MAXI BAG			MINI BAG		
	MEAN	MEDIAN	MODE	MEAN	MEDIAN	MODE
Eastern	0.42	0.44	0.46	0.64	0.69	0.69
Volta	0.69	0.67	0.63	0.79	0.73	0.58
Central	0.52	0.48	0.47	0.75	0.70	0.95
Western	0.54	0.54	0.63	0.70	0.73	0.81
Ashanti	0.37	0.36	0.34	0.49	0.48	0.46
Brong Ahafo	0.27	0.26	0.24	0.30	0.27	0.26
Northern	0.39	0.38	0.38	0.42	0.42	0.45
Upper East	0.53	0.55	0.54	0.66	0.68	0.71
Upper West	0.32	0.31	0.37	0.38	0.40	0.39
Greater Accra	0.50	0.48	0.47	0.71	0.70	0.63

Table 3.41: Mean Charcoal Prices by Regions (% Change over previous year)

REGION	MAXI BAG			MINI BAG		
	2013	2014	% Change over previous year	2013	2014	% Change over previous year
Eastern	19.03	22.21	16.70	13.44	16.62	23.65
Volta	32.02	36.43	13.76	16.66	20.67	24.05
Central	26.49	31.09	17.35	19.83	23.53	18.68
Western	25.79	28.58	10.81	15.30	18.20	18.94
Ashanti	16.62	19.32	16.26	9.15	12.71	38.86
Brong Ahafo	12.58	15.81	25.67	7.11	9.22	29.61
Northern	18.30	22.15	21.02	9.10	12.88	41.56
Upper East	24.93	30.65	22.96	14.80	20.35	37.50
Upper West	15.56	18.25	17.26	9.42	11.86	25.87
Greater Accra	23.66	30.26	27.89	17.43	22.42	28.63
Country Average	21.19	25.11	18.52	13.25	16.66	25.72

From Table 3.41, the national mean price of a maxi bag of charcoal has increased by 19% over that of 2013 whilst the mini bag has increased by 26% within the same period.

Table 3.42: Mean Charcoal Prices per kg in in Ghana Cedis by Regions (% Change over previous year)

REGION	MAXI BAG			MINI BAG		
	2013	2014	% Change over previous year	2013	2014	% Change over previous year
Eastern	0.36	0.42	17.50	0.52	0.64	22.91
Volta	0.61	0.69	13.75	0.64	0.79	24.20
Central	0.44	0.52	17.75	0.63	0.75	18.59
Western	0.49	0.54	11.09	0.59	0.70	18.63
Ashanti	0.32	0.37	15.02	0.35	0.49	39.62
Brong Ahafo	0.22	0.27	24.97	0.23	0.30	29.25
Northern	0.32	0.39	20.36	0.29	0.42	43.29
Upper East	0.43	0.53	23.97	0.48	0.66	36.77
Upper West	0.27	0.32	17.53	0.30	0.38	27.50
Greater Accra	0.39	0.50	29.31	0.55	0.71	29.41

Table 3.43: January – December 2014 Statistics – Charcoal Prices by Regional Capitals

REGION	MAXI BAG			MINI BAG		
	MEAN	MEDIAN	MODE	MEAN	MEDIAN	MODE
Koforidua	26.21	25.50	24.00	20.14	20.00	22.00
Ho	35.39	35.00	32.00	17.52	17.00	15.00
Cape Coast	39.73	35.50	34.00	30.58	30.00	30.00
Takoradi	29.83	28.50	28.00	20.22	20.25	22.00
Kumasi	18.04	18.25	19.00	12.60	12.50	12.00
Sunyani	21.56	19.50	17.00	11.48	11.00	8.50
Tamale	23.96	24.00	22.00	13.22	14.00	15.00
Bolgatanga	28.47	26.00	36.00	19.04	19.00	22.00
Wa	21.59	21.00	21.00	14.20	14.00	14.00
Accra	28.89	25.83	25.33	21.64	20.50	23.00
Country Average	25.11	24.00	22.00	16.66	16.50	20.00

Table 3.44: Average Prices of charcoal in Ghana Cedis per kg by Regions Capitals: January – December 2014

REGION	MAXI BAG			MINI BAG		
	MEAN	MEDIAN	MODE	MEAN	MEDIAN	MODE
Koforidua	0.50	0.49	0.46	0.67	0.65	0.58
Ho	0.67	0.67	0.61	0.67	0.65	0.58
Cape Coast	0.66	0.59	0.57	0.64	0.64	0.70
Takoradi	0.57	0.54	0.53	0.78	0.78	0.85
Kumasi	0.34	0.35	0.36	0.48	0.48	0.46
Sunyani	0.38	0.34	0.30	0.37	0.35	0.27
Tamale	0.42	0.42	0.38	0.43	0.45	0.48
Bolgatanga	0.50	0.45	0.63	0.61	0.61	0.71
Wa	0.38	0.37	0.37	0.46	0.45	0.45
Accra	0.48	0.43	0.42	0.69	0.65	0.73

Table 3.45: Mean Charcoal Prices by Capital Urban centres (% Change over previous year)

CAPITAL TOWN	MAXI BAG			MINI BAG		
	2013	2014	% Change over previous year	2013	2014	% Change over previous year
Koforidua	23.57	26.21	11.19	14.60	20.14	37.91
Ho	29.81	35.39	18.70	14.86	17.52	17.91
Cape Coast	34.37	39.73	15.59	27.22	30.58	12.36
Takoradi	28.21	29.83	5.75	18.52	20.22	9.17
Kumasi	16.22	18.04	11.23	8.35	12.60	50.89
Sunyani	15.79	21.56	36.56	8.21	11.48	39.82
Tamale	19.71	23.96	21.55	8.71	13.22	51.77
Bolgatanga	20.77	28.47	37.07	14.29	19.04	33.25
Wa	20.51	21.59	5.28	12.31	14.20	15.39
Accra	21.78	28.89	32.66	16.66	21.64	29.89
Country Average	21.19	25.11	18.54	13.22	16.66	25.72

Table 3.46: Mean Charcoal Prices per kg in in Ghana Cedis by Capital Urban centres (% Change over previous year)

CAPITAL TOWN	MAXI BAG			MINI BAG		
	2013	2014	% Change over previous year	2013	2014	% Change over previous year
Koforidua	0.45	0.50	10.93	0.57	0.67	18.22
Ho	0.57	0.67	18.25	0.57	0.67	18.22
Cape Coast	0.57	0.66	16.17	0.59	0.64	8.79
Takoradi	0.54	0.57	5.23	0.71	0.78	9.53
Kumasi	0.29	0.34	18.50	0.35	0.48	38.45
Sunyani	0.27	0.38	38.89	0.26	0.37	42.42
Tamale	0.34	0.42	22.55	0.28	0.43	52.29
Bolgatanga	0.36	0.50	37.53	0.46	0.61	33.53
Wa	0.36	0.38	4.31	0.40	0.46	14.55
Accra	0.36	0.48	33.76	0.53	0.69	29.61

Table 3.47: January - December 2014 Statistics - Charcoal Prices by Ecological Zones

ECOLOGICAL ZONES	MAXI BAG			MINI BAG		
	MEAN	MEDIAN	MODE	MEAN	MEDIAN	MODE
Coastal	32.94	31.00	28.00	22.42	21.00	20.00
Forest	24.40	23.00	22.00	16.22	15.00	15.00
Transition	16.04	15.00	15.00	9.51	9.00	8.00
Savanna	23.73	22.50	22.00	15.06	14.00	14.00
Ghana	25.11	24.00	22.00	16.66	16.50	20.00

Table 3.48: Mean Charcoal Prices by Ecological Zones (% Change over previous year)

ECOLOGICAL ZONES	MAXI BAG			MINI BAG		
	MEAN	MEDIAN	MODE	MEAN	MEDIAN	MODE
Coastal	0.53	0.52	0.47	0.71	0.67	0.63
Forest	0.46	0.44	0.42	0.62	0.58	0.58
Transition	0.28	0.26	0.26	0.31	0.29	0.26
Savanna	0.41	0.39	0.38	0.49	0.45	0.45

Table 3.49: Average Prices of charcoal in Ghana Cedis per kg by Ecological Zones (January- December 2014)

ECOLOGICAL ZONES	MAXI BAG			MINI BAG		
	2013	2014	% Change over previous year	2013	2014	% Change over previous year
Coastal	27.19	32.94	21.16	18.18	22.43	23.39
Forest	21.05	24.40	15.90	12.56	16.22	29.12
Transition	12.67	16.04	26.58	7.42	9.51	28.21
Savanna	19.60	23.73	21.08	11.13	15.06	35.31

Table 3.50: High and Low Price Districts - 2014

Region	High Price Districts	Low Price Districts
Eastern	New Juabeng, Birim South	Afram Plains
Volta	Nkwanta, Ketu South, Ho	Nkonya, South Dayi
Central	Awutu Effutu Senya, Cape Coast, Agona Swedru	Upper Denkyira East
Western	Nzema East, Sekondi/Takoradi, Juabeso, Tarkwa	Amenfi East
Ashanti	Asante Akim North, Offinso	Kumasi
Brong Ahafo	Sunyani, Techiman	Nkoranza South, Atebubu Amantin, Jaman North, Kintampo North
Northern	Tamale, Yendi	East Gonja
Upper East	Kassena Nankana, Bolgatanga, Bawku	Not available
Upper West	Wa	Sissala East, Jirapa Lambussie
Greater Accra	Tema, Ashaiman, Accra	Ga East

Figure 3.1: Trends in Regional Mean charcoal Prices for Maxi Bag: January – December 2014

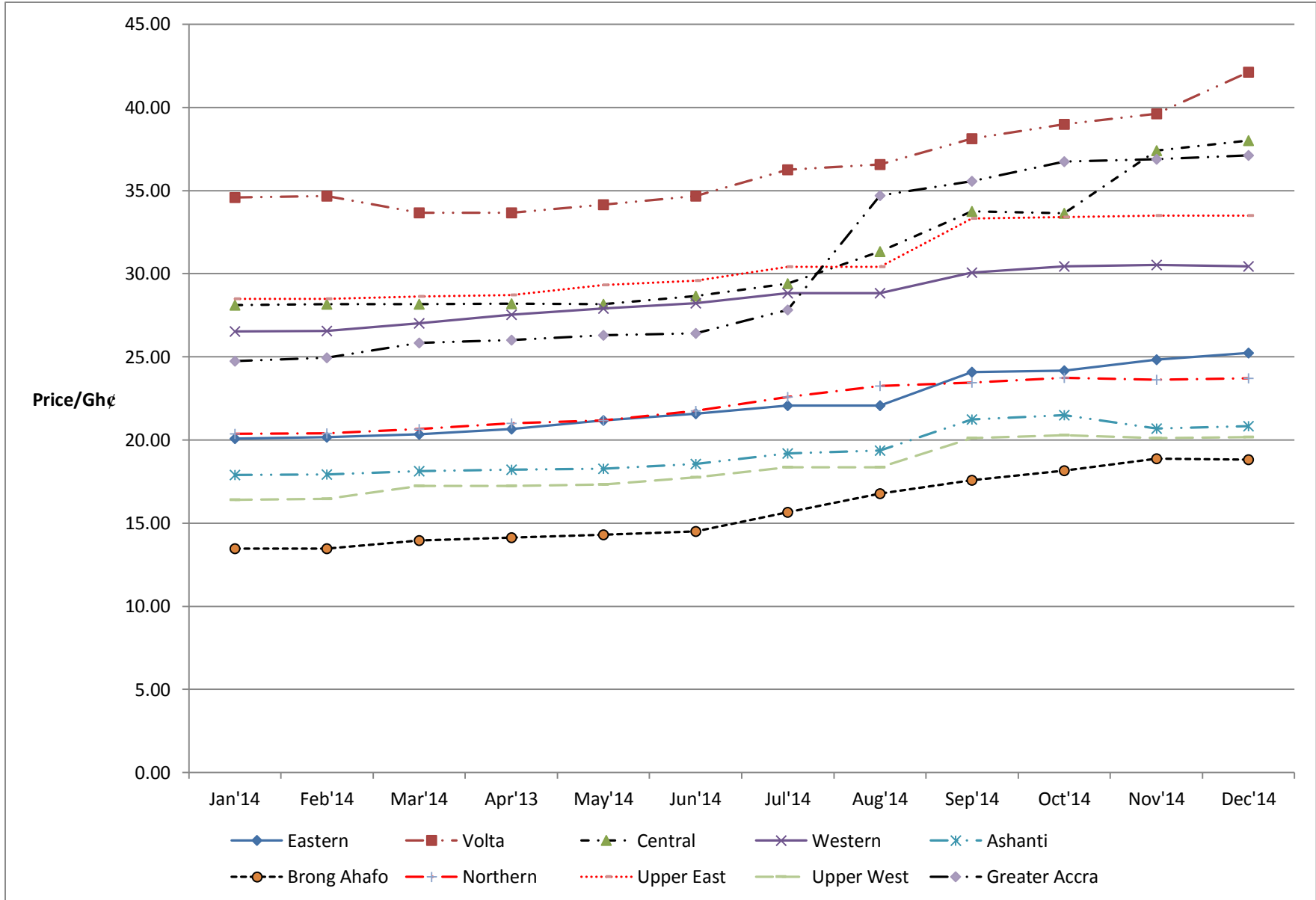


Table 3.51: Mean Prices of charcoal in Ghana Cedis by Regions: January –December 2014 (Maxi Bag)

Region	Jan'14	Feb'14	Mar'14	Apr'13	May'14	Jun'14	Jul'14	Aug'14	Sep'14	Oct'14	Nov'14	Dec'14	Yearly Mean
Eastern	20.08	20.17	20.33	20.67	21.17	21.58	22.08	22.08	24.08	24.17	24.83	25.25	22.21
Volta	34.58	34.67	33.67	33.67	34.17	34.67	36.25	36.58	38.13	39.00	39.63	42.13	36.43
Central	28.13	28.17	28.17	28.21	28.17	28.67	29.42	31.33	33.75	33.63	37.42	38.00	31.09
Western	26.53	26.55	27.03	27.55	27.93	28.23	28.83	28.83	30.08	30.45	30.53	30.45	28.58
Ashanti	17.91	17.94	18.13	18.22	18.28	18.56	19.19	19.38	21.25	21.50	20.69	20.84	19.32
Brong Ahafo	13.48	13.48	13.96	14.15	14.29	14.50	15.65	16.77	17.58	18.17	18.88	18.81	15.81
Northern	20.38	20.42	20.67	21.00	21.17	21.75	22.58	23.25	23.46	23.75	23.63	23.71	22.15
Upper East	28.50	28.50	28.63	28.71	29.33	29.58	30.42	30.42	33.33	33.42	33.50	33.50	30.65
Upper West	16.42	16.46	17.25	17.25	17.33	17.75	18.38	18.38	20.13	20.29	20.13	20.17	18.33
Greater Accra	24.75	24.94	25.85	26.00	26.29	26.42	27.83	34.71	35.56	36.75	36.90	37.10	30.26

Figure 3.2: Trends in Regional Mean charcoal in Ghana Prices per kg: January – December 2014 (Maxi Bag)

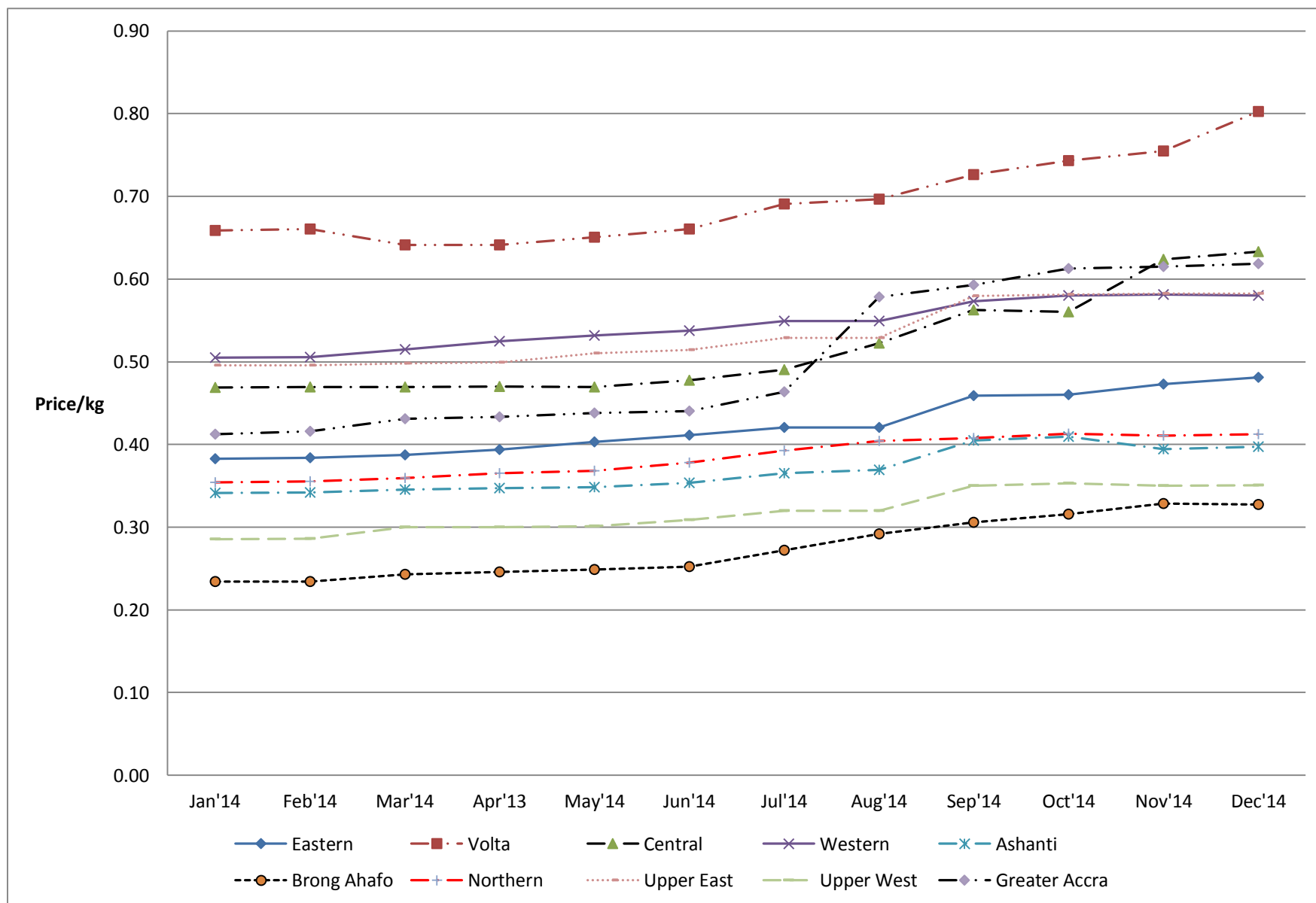


Table 3.52: Mean Prices of charcoal in Ghana Cedis per kg: January – December 2014 (Maxi Bag)

Region	Jan'14	Feb'14	Mar'14	Apr'13	May'14	Jun'14	Jul'14	Aug'14	Sep'14	Oct'14	Nov'14	Dec'14	Yearly Mean
Eastern	0.38	0.38	0.39	0.39	0.40	0.41	0.42	0.42	0.46	0.46	0.47	0.48	0.42
Volta	0.66	0.66	0.64	0.64	0.65	0.66	0.69	0.70	0.73	0.74	0.75	0.80	0.69
Central	0.47	0.47	0.47	0.47	0.47	0.48	0.49	0.52	0.56	0.56	0.62	0.63	0.52
Western	0.51	0.51	0.51	0.52	0.53	0.54	0.55	0.55	0.57	0.58	0.58	0.58	0.54
Ashanti	0.34	0.34	0.35	0.35	0.35	0.35	0.37	0.37	0.40	0.41	0.39	0.40	0.37
Brong Ahafo	0.23	0.23	0.24	0.25	0.25	0.25	0.27	0.29	0.31	0.32	0.33	0.33	0.27
Northern	0.35	0.36	0.36	0.37	0.37	0.38	0.39	0.40	0.41	0.41	0.41	0.41	0.39
Upper East	0.50	0.50	0.50	0.50	0.51	0.51	0.53	0.53	0.58	0.58	0.58	0.58	0.53
Upper West	0.29	0.29	0.30	0.30	0.30	0.31	0.32	0.32	0.35	0.35	0.35	0.35	0.32
Greater Accra	0.41	0.42	0.43	0.43	0.44	0.44	0.46	0.58	0.59	0.61	0.61	0.62	0.50

Figure 3.3: Trends in Regional Mean charcoal Prices for Mini Bag: January – December 2014

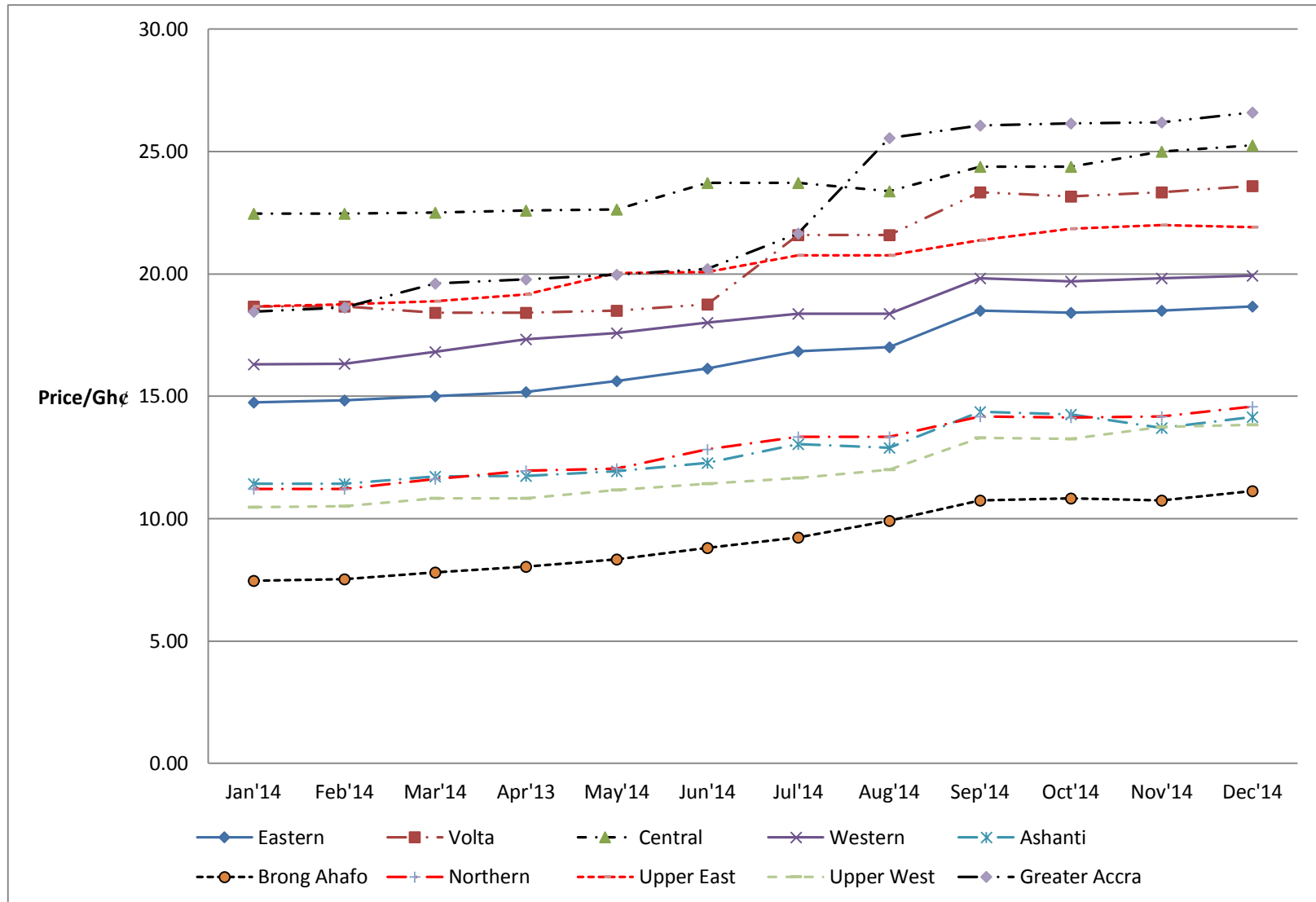


Table 3.53: Mean Prices of charcoal in Ghana Cedis by Regions: January–December 2014 (Mini Bag)

Region	Jan'14	Feb'14	Mar'14	Apr'13	May'14	Jun'14	Jul'14	Aug'14	Sep'14	Oct'14	Nov'14	Dec'14	Yearly Mean
Eastern	14.75	14.83	15.00	15.17	15.63	16.13	16.83	17.00	18.50	18.42	18.50	18.67	16.62
Volta	18.67	18.67	18.42	18.42	18.50	18.75	21.58	21.58	23.33	23.17	23.33	23.58	20.67
Central	22.46	22.46	22.50	22.58	22.63	23.71	23.71	23.38	24.38	24.38	25.00	25.25	23.53
Western	16.30	16.33	16.83	17.33	17.58	18.00	18.38	18.38	19.83	19.70	19.83	19.93	18.20
Ashanti	11.43	11.43	11.71	11.75	11.93	12.29	13.04	12.89	14.36	14.25	13.71	14.14	12.74
Brong Ahafo	7.46	7.52	7.81	8.04	8.33	8.81	9.23	9.92	10.75	10.83	10.75	11.13	9.22
Northern	11.21	11.21	11.63	11.96	12.04	12.83	13.33	13.33	14.17	14.13	14.17	14.58	12.88
Upper East	18.67	18.75	18.88	19.17	20.04	20.08	20.75	20.75	21.38	21.83	22.00	21.92	20.35
Upper West	10.46	10.50	10.83	10.83	11.17	11.42	11.67	12.00	13.29	13.25	13.75	13.83	11.92
Greater Accra	18.46	18.63	19.60	19.77	19.98	20.21	21.65	25.54	26.06	26.15	26.19	26.60	22.40

Figure 3.4: Trends in Regional Mean charcoal Prices per kg for Mini Bag: January – December 2014

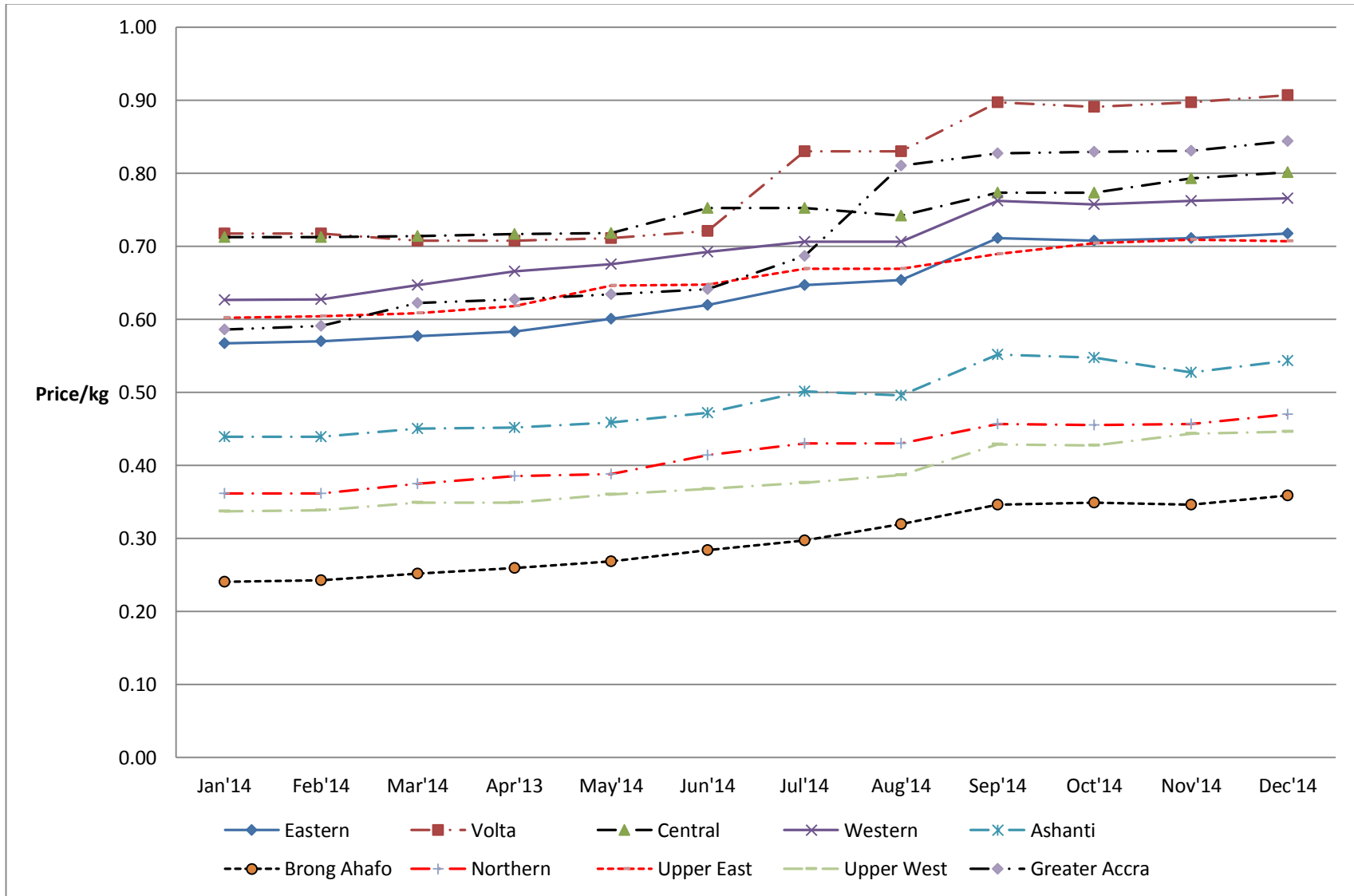


Table 3.54: Mean Prices of charcoal in Ghana Cedis per kg: January – December 2014 (Mini Bag)

Region	Jan'14	Feb'14	Mar'14	Apr'13	May'14	Jun'14	Jul'14	Aug'14	Sep'14	Oct'14	Nov'14	Dec'14	Yearly Mean
Eastern	0.57	0.57	0.58	0.58	0.60	0.62	0.65	0.65	0.71	0.71	0.71	0.72	0.64
Volta	0.72	0.72	0.71	0.71	0.71	0.72	0.83	0.83	0.90	0.89	0.90	0.91	0.79
Central	0.71	0.71	0.71	0.72	0.72	0.75	0.75	0.74	0.77	0.77	0.79	0.80	0.75
Western	0.63	0.63	0.65	0.67	0.68	0.69	0.71	0.71	0.76	0.76	0.76	0.77	0.70
Ashanti	0.44	0.44	0.45	0.45	0.46	0.47	0.50	0.50	0.55	0.55	0.53	0.54	0.49
Brong Ahafo	0.24	0.24	0.25	0.26	0.27	0.28	0.30	0.32	0.35	0.35	0.35	0.36	0.30
Northern	0.36	0.36	0.38	0.39	0.39	0.41	0.43	0.43	0.46	0.46	0.46	0.47	0.42
Upper East	0.60	0.60	0.61	0.62	0.65	0.65	0.67	0.67	0.69	0.70	0.71	0.71	0.66
Upper West	0.34	0.34	0.35	0.35	0.36	0.37	0.38	0.39	0.43	0.43	0.44	0.45	0.38
Greater Accra	0.59	0.59	0.62	0.63	0.63	0.64	0.69	0.81	0.83	0.83	0.83	0.84	0.71

3.2 Causes allegedly contributing to high prices of charcoal

According to the charcoal dealers interviewed, high prices of LPG, high transport fares and bad nature of roads leading to the major producing centres contribute to the increasing prices of charcoal for the period under review. The analysis indicated that 47.0% of the dealers said the increasing prices of charcoal was due to high transport fares, 32.0% said it was due to high prices of LPG and 21.0% attributed it to the bad nature of the roads leading to the production and the wholesale areas as shown in Figure 3.5.

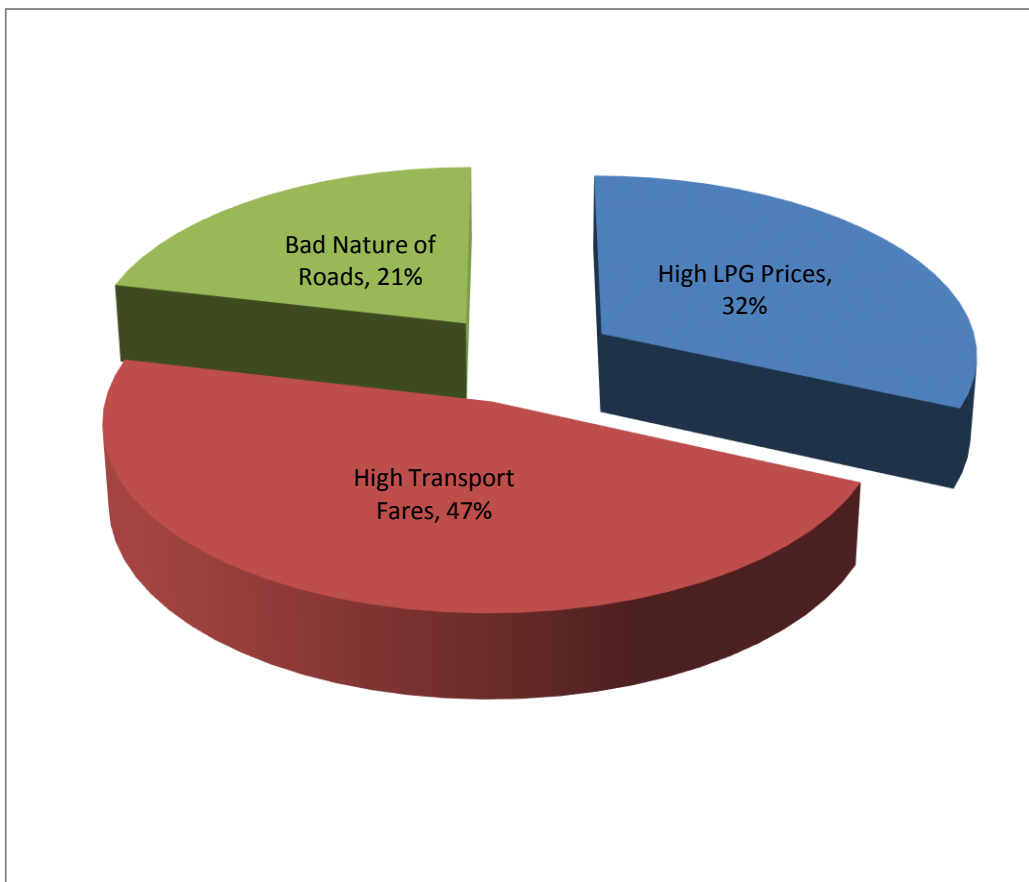


Figure 3.5: Causes allegedly contributing to high prices of charcoal

3.3 Sources of charcoal supply

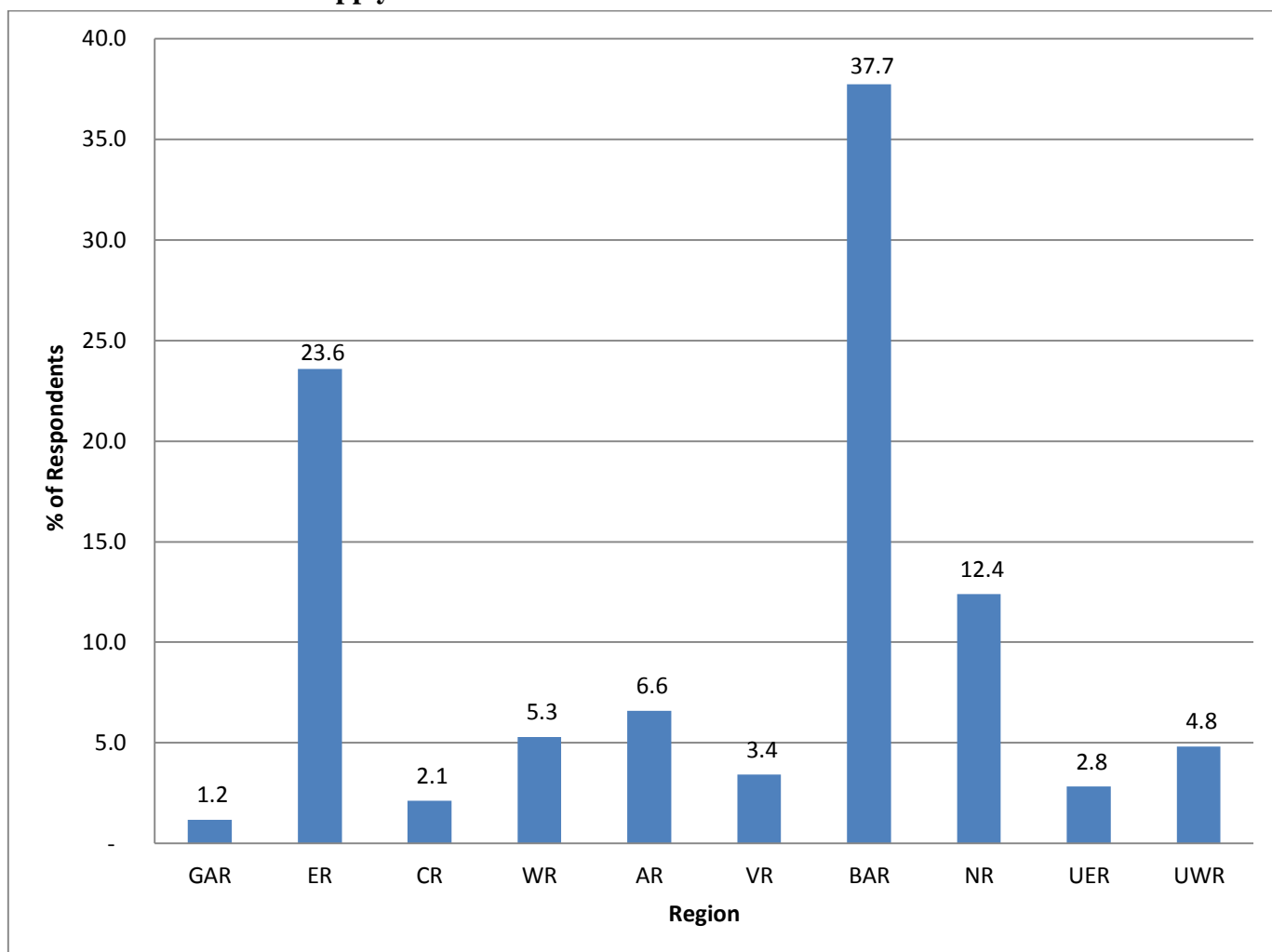


Figure 3.6: Sources of Charcoal Supply in 2014 (Production Areas)

According to the charcoal dealers interviewed, major charcoal producing areas are still Kintampo, Nkoranza, Wenchi, Jaman and Afram Plains (in the Transition zone) and Damongo, Yendi, Yeji, Salaga and Bamboi (in the Savannah zone). 37.7% of the charcoal dealers said the charcoal comes from Brong Ahafo Region, 23.6% of them said the charcoal comes from the Eastern Region and 12.4% said it comes from the Northern Region (Figure 3.6).

CHAPTER FOUR: CONCLUSION

4.1 Key Findings

For the period under review, the analysis shows that the prices of both the maxi and mini bags of charcoal have been increasing. The national mean price of maxi bag of charcoal has increased from GH¢21.19 in 2013 to GH¢25.11 in 2014 by 19% whilst that of the mini bag of charcoal has also increased from GH¢13.25 in 2013 to GH¢16.66 in 2014 by 26% (Table 3.41).

The national maximum price for the **maxi bag** was GH¢54.00 and it occurred at Denu in the Ketu South Constituency of the Volta Region. The minimum price for the maxi bag was GH¢11.00. It occurred at Kintampo in the Brong Ahafo Region. The national maximum price for the **mini bag** was GH¢35.00. It occurred in the Cape Coast Metropolis. The minimum price for the mini bag was GH¢5.50. It occurred at Kintampo in the Brong Ahafo Region.

Further, the trends in the pricing of charcoal indicated that the product is more expensive in the coastal areas (Table 3.47). According to the charcoal dealers, high prices of LPG/no LPG, high transport fares and bad nature of roads leading to the major producing centres were the causes that contributed to the increasing prices of charcoal for the period under review (Figure 3.5). The least expensive centres are in the transition zone - Donkorkrom, Kintampo, Atebubu, Jaman North, Nkoranza, Sissala East and Techiman which are basically the production/supply areas (Figure 3.6).

The transition and savanna zones of Ghana, mainly Kintampo, Nkoranza, Wenchi and Jaman (all in the Brong Ahafo Region), Afram Plains - Donkorkrom (in Eastern Region), Damongo, Yendi and Bamboi (Northern Region) are **still** the major charcoal production/supply areas (Figure 3.6).

APPENDIX

A.1 Map of Ghana showing the Ecological Zones of the Country



NOTE: In the Report, Savanna Zone is equivalent to Sudan Savanna and Guinea Savanna, Transitional Zone is equivalent to Forest Savanna Transition, Forest is equivalent to Semi-Deciduous Rainforest and High Rainforest and Coastal Zone is equivalent to Coastal Savanna.

A.2 Map of Ghana showing Regional Capitals and Some Districts urban centres

